

LOS ANGELES COUNTY
DEPARTMENT OF PUBLIC WORKS

BENCH MARK LIST



BELLFLOWER QUAD
LAKEWOOD QUAD
SOUTH GATE QUAD

1990 ADJUSTMENT

PREFACE 1990

The Department of Public Works level net is composed of more than 1,700 miles of levels supporting in excess of 9,000 bench marks. In 1990, a major readjustment of the Baseline and nets was undertaken. To emphasize the complete break with previous elevations, the CY, CG & CL series bench marks have been relabeled DY, DG, & DL, respectively.

To facilitate the adjustment, indexing, and distribution of adjusted values of the net, the County territory is divided into 33 quads or areas. For identification purposes each quad is given a name, viz., "Rosemead," "La Mirada," "Santa Fe", etc. When bench marks and elevations in these nets are used, the name of the quad and the date of the adjustment must be included in the bench mark description, e.g.,

DY 9701 - RDBM TAG IN CB 5FT S/O BCR @ SE COR BOLSA ST & DOMINGUEZ ST
63FT S & 20FT E/O C/L INT
(GARDENA - 1990) ELEV. 16.704

Experience indicates that this general adjustment will, for the most part, remain sound for the next 10 years. Updating constrained adjustments will be made in 5 years. It is expected that these updating adjustments will be in the nature of a few hundredths of a foot. When a quad is readjusted, new elevation lists will be published and the date of the readjustment will be noted in the bench mark description. Two bench marks with different adjustment dates will not normally agree with each other.

The basic accuracy of the net is reflected by an indicated field probable error of plus or minus 0.012 foot per mile of leveling as determined from over 600 conditions of closure. However, many years experience in vertical control in the greater Los Angeles basin and Antelope Valley indicate that because of varying degrees of subsidence and heaving, the true datum is recovered only by obtaining substantial agreement of a number of bench marks.

The users of this net are invited to assist in its maintenance by notifying this Department of cases of obliteration, apparent mistakes in descriptions or elevations, and proven disturbance of bench marks.

DATUM: U.S. Coast and Geodetic Survey Sea Level Datum
of 1929, through the medium of the Los Angeles
County Engineer Precise Level Net.

ABBREVIATIONS USED IN BENCH MARK LISTINGS

ABUT -----	Abutment	ECR -----	End of Curb Return
ALG -----	Along	EC -----	End of Curve
ANG PT -----	Angle Point	ENT -----	Entrance
B/W -----	Back of Walk	FL -----	Floor
BCR -----	Beginning of Curb Return	FTG -----	Footing
BC -----	Beginning of Curve	FRWY -----	Freeway
BLDG -----	Building	F/W -----	Front of Walk
BM -----	Bench Mark	GAR -----	Garage
BT SPK -----	Boat or Bolt Spike	HDWL -----	Headwall
BR CAP -----	Brass or Bronze Cap	HSE -----	House
C B -----	Catch Basin	HWY -----	Highway
CTR -----	Center	INT -----	Intersection
C/L -----	Center Line	IP -----	Iron Pipe
C/L INT -----	Center Line Intersection	LT -----	Left
C/L PROD -----	Center Line Produced	LACE -----	L.A. City Engineer
CONC -----	Concrete	LACS -----	L.A. Co. Engineer
COR -----	Corner	LAFC -----	L.A. Co. Flood Control
COE -----	Corps of Engineers	L&BN -----	Lead and Bench Nail
CULV -----	Culvert	L&BR -----	Lead and Brad
CYN -----	Canyon	L&N -----	Lead and Nail
CB -----	Curb	L&SPK -----	Lead and Spike
CS MON -----	Co. Eng. Monument	L&T -----	Lead and Tack
CT SPK -----	Cut Spike	MCR -----	Middle of Curb Return
DPW -----	Dept. of Public Works	MKD -----	Marked
DR -----	Drive or Driveway	MC -----	Middle of Curve
E/O -----	East of	MON -----	Monument

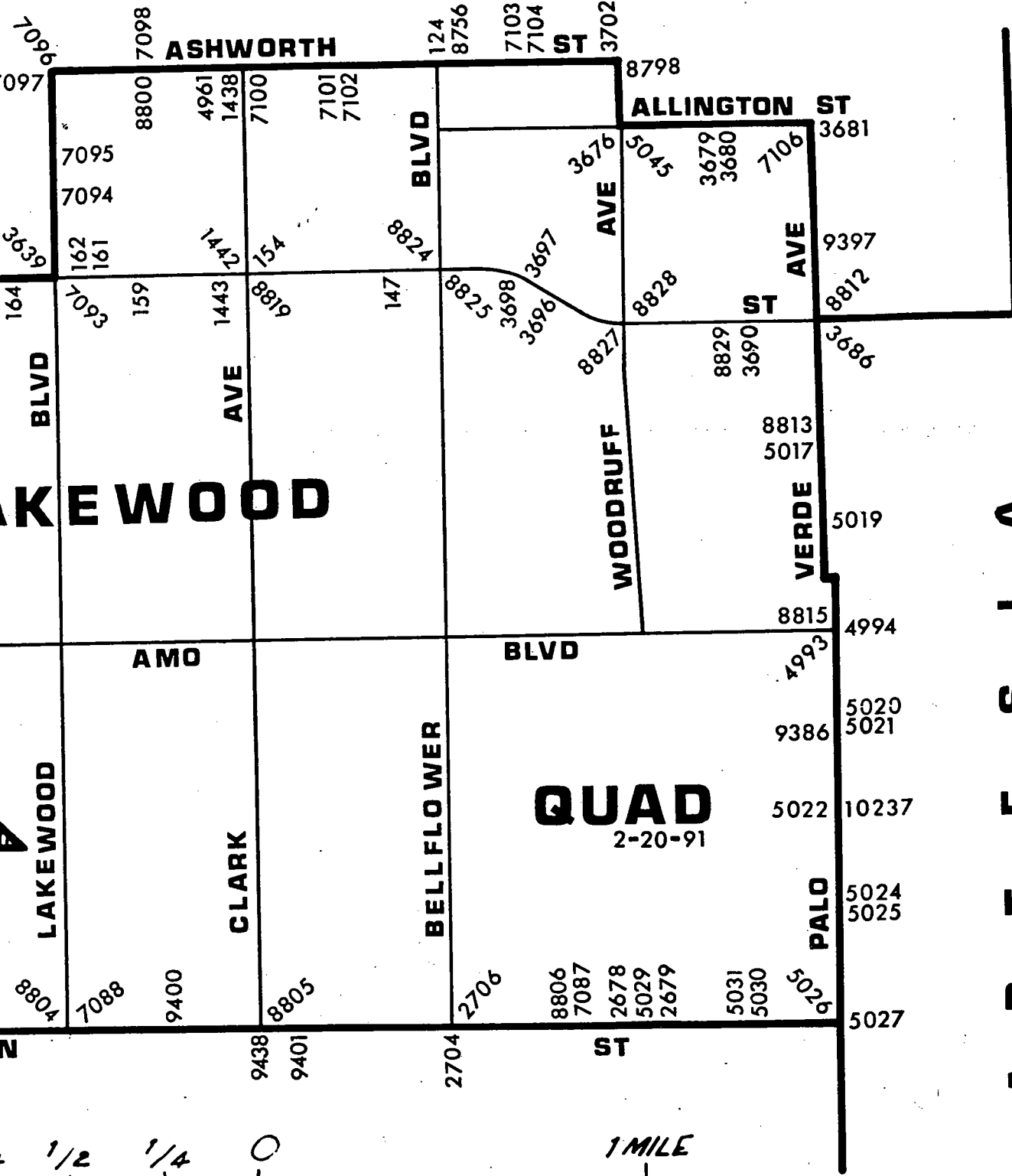
ABBREVIATIONS USED IN BENCH MARKS (CON'T)

N/O ----- North of
NR ----- Near
OPP ----- Opposite
PI ----- Point of Intersection
PK&W ----- PK Nail and Washer
P/L ----- Property Line
POST ----- Point of Semi-Tangent
PP ----- Power Pole
PVMT ----- Pavement
PROD ----- Produced
RD ----- Road
RDBM ----- Road Dept. Bench Mark
RDBM TAG ----- Road Dept. Bench Mark Tag
RR ----- Railroad
RT ----- Right
R/W ----- Right of Way
SDMH ----- Storm Drain Manhole
SMH ----- Sewer Manhole
SPK ----- Spike
ST&W ----- Spike Tin and Washer
S/O ----- South of
TP ----- Telephone Pole
USC&GS ----- U.S. Coast and Geodetic Survey
USGS ----- U.S. Geological Survey
WK ----- Walk
W/O ----- West of

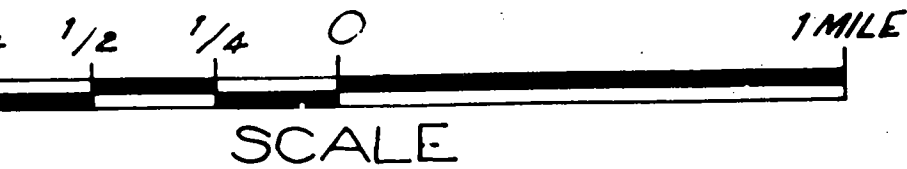
Q U A D

Q U A D

A R T E S I A



QUAD
2-20-91



SCALE

LAKWOOD

INDEX PG 1

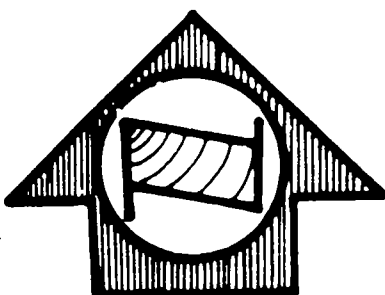
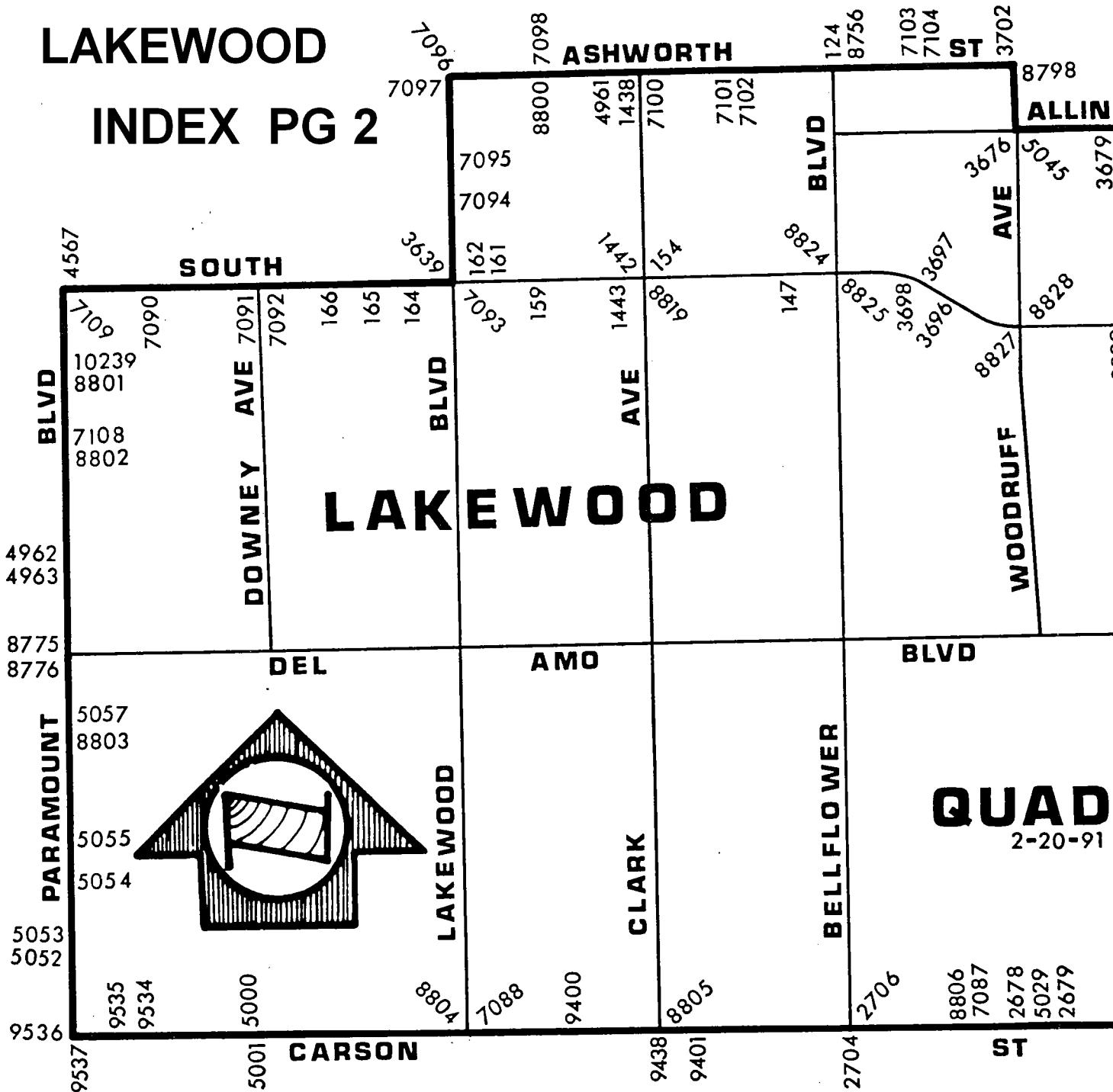
OLD LINES WITHOUT NUMBERS INDICATE
S LINES OF BENCH MARKS THAT ARE
INCLUDED IN THE 1980 ADJUSTMENT.

Q U A D

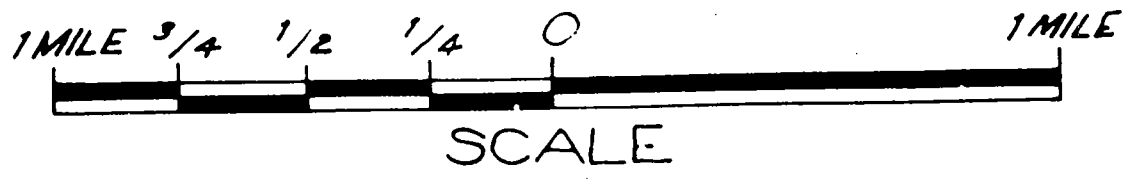
LAKWOOD

INDEX PG 2

B E L L F L O W E R



QUAD
2-20-91



LIGHT SOLID LINES WITHOUT NUMBERS INDICATE PREVIOUS LINES OF BENCH MARKS THAT ARE NOT INCLUDED IN THE 1980 ADJUSTMENT.

RIVERA

QUAD

QUAD

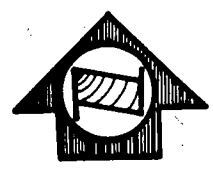
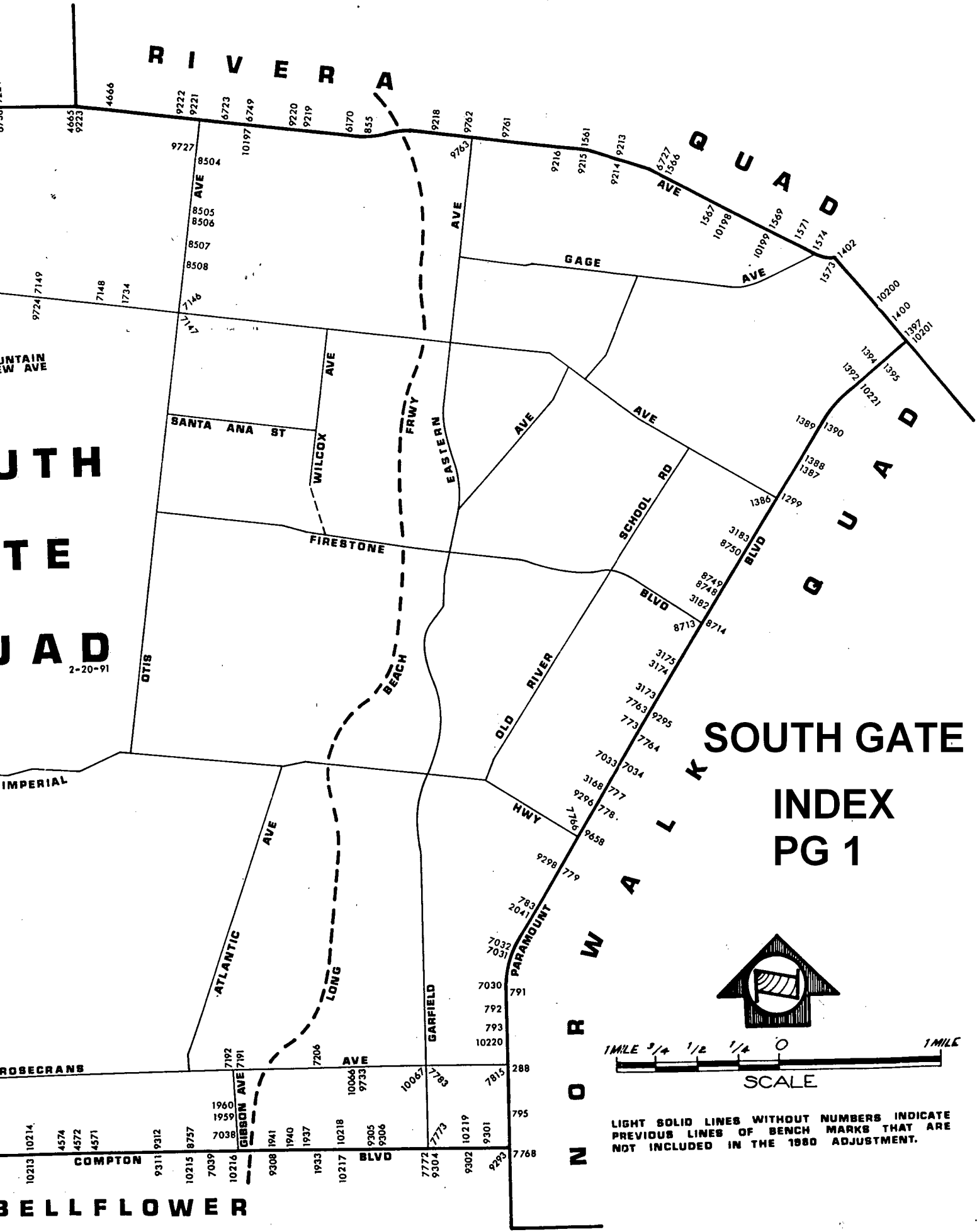
SOUTH GATE

INDEX
PG 1

NORWALK

QUAD

JTH
TE
JAD
2-20-91



SCALE

LIGHT SOLID LINES WITHOUT NUMBERS INDICATE PREVIOUS LINES OF BENCH MARKS THAT ARE NOT INCLUDED IN THE 1980 ADJUSTMENT.

RIVERA

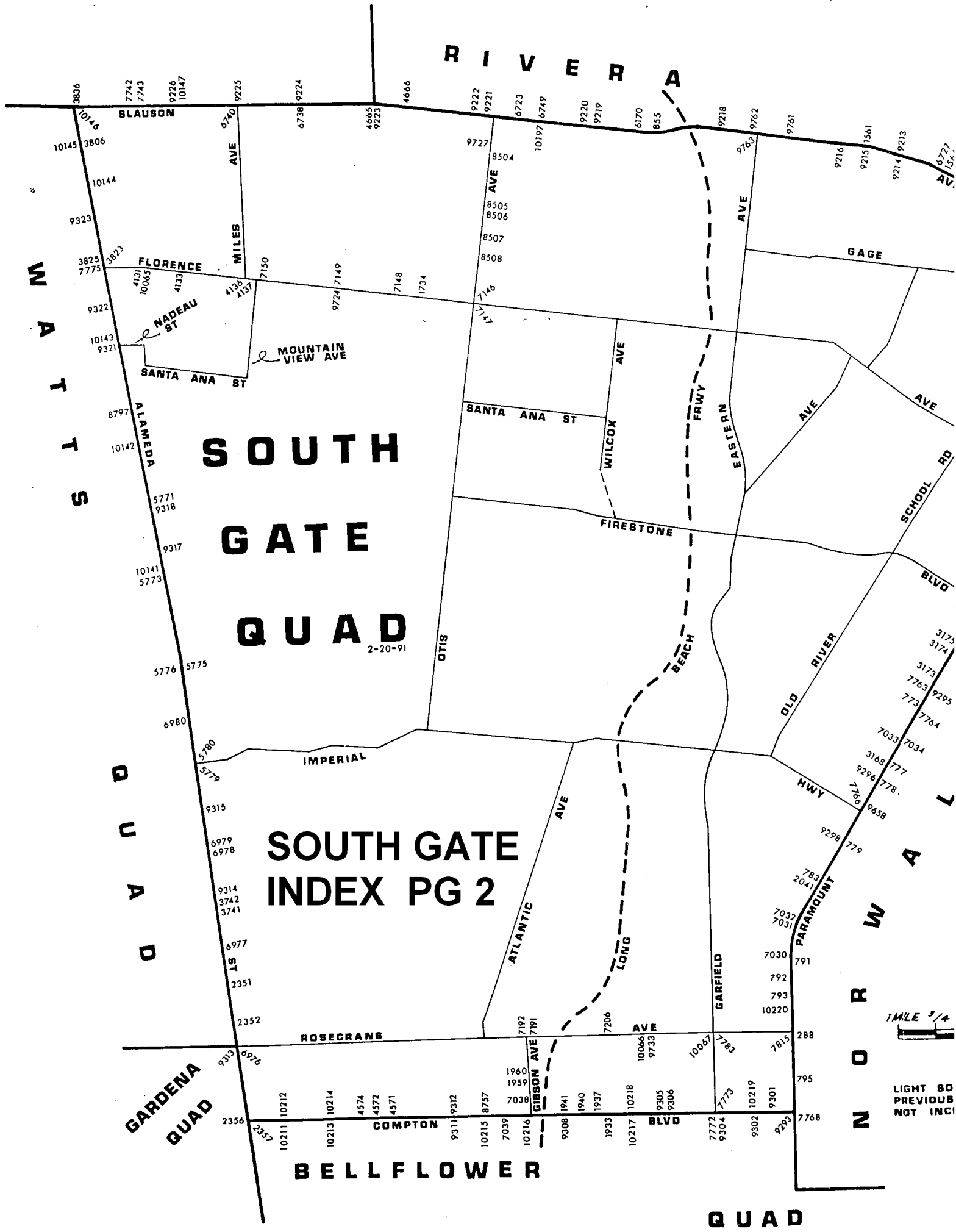
W
A
T
S

Q
U
A
D

N
O
R
W
A
L

SOUTH GATE QUAD

SOUTH GATE INDEX PG 2



1/4 MILE

LIGHT SO PREVIOUS NOT INCL

QUAD-YEAR	ELEV	DESCRIPTION (INCLUDE QUAD AND YEAR IN DESCRIPTION)	BM NUMBER
BELLFLWR (1990)	63.481	FCBM 2FT N BCR @ NE COR BELLFLOWER BLVD & RAMONA ST 42FT N & 42FT W C/L INT MKD (74-19C)	DY 121
BELLFLWR (1990)	61.756	L&BN 1FT N CB RET @ NW COR CEDAR AVE & BELLFLOWER BLVD 33FT N & 42FT W C/L INT	DY 122
BELLFLWR (1990)	60.177	L&SPK 5FT N/O BCR @ NW COR ROSE ST & BELLFLOWER BLVD 40FT N & 42FT W C/L INT	DY 123
BASELINE (1990)	59.050	L&T 1FT W CB RET @ NW COR ASHWORTH ST & BELLFLOWER BLVD 18FT N & 62FT W/O C/L INT	DY 124
LAKEWOOD (1990)	54.799	BT SPK E CB AUTRY AVE 85FT N C/L SOUTH ST & 16FT E/O C/L AUTRY AVE MKD (BM LC 99)	DY 147
LAKEWOOD (1990)	53.414	FC MON N CB SOUTH ST 52FT N C/L & 58 E C/L CLARK AVE MKD (BM 74-504)	DY 154
LAKEWOOD (1990)	54.111	L&T N CB SERVICE RD 8FT W BCR @ NW COR GRAYWOOD AVE & SOUTH ST 80FT N & 48FT W C/L INT	DY 159
LAKEWOOD (1990)	54.307	L & T 10FT W BCR @ NW COR BLACKTHORNE AVE & SOUTH ST 80FT N & 50FT W C/L INT	DY 161
LAKEWOOD (1990)	53.986	L&T N CB SERVICE RD 5FT W BCR @ NW COR BONFAIR AVE & SOUTH ST 80FT N & 50FT W C/L INT	DY 162
BASELINE (1990)	53.294	L&T W CB 1FT N CB RET @ NW COR OLIVA AVE & SOUTH ST (SERVICE RD) 110FT N & 20FT W/O C/L INT	DY 164
BASELINE (1990)	52.876	L&T N CB SERVICE RD 2FT W CB RET @ NW COR CASTANA AVE & SOUTH ST 89FT N & 57FT W C/L INT	DY 165
BASELINE (1990)	52.564	L&T N CB SERVICE RD 1FT W CB RET @ NW COR HAYTER AVE & SOUTH ST 89FT N & 56FT W C/L INT	DY 166
BASELINE (1990)	73.374	4.5 IN IP WITH L&T 6IN BACK WK ON SE COR PARAMOUNT BLVD & ROSECRANS AVE 244FT S C/L 50FT E C/L INT MKD (LAC 32)	DY 288
BASELINE (1990)	73.078	CS REF MON IN WELL 14IN DN ON NE COR ALONDRA BLVD & WOODRUFF AVE 56FT N & 60FT E/O C/L INT MKD (CLEARWATER K 2A)	DY 473
BASELINE (1990)	73.716	CSBM MON FL ON NW COR ALONDRA BLVD & WOODRUFF AVE 39FT N & 180FT W C/L INT MKD (BM 6-6A1958)	DY 474
BASELINE (1990)	74.704	L&N IN E CB 18FT E/O C/L EUCALYPTUS AVE & 80FT S/O C/L ALONDRA BLVD (15FT W/O BCR)	DY 477
BASELINE (1990)	75.143	L&T IN E CB 15FT E/O C/L LEAHY AVE & 80FT N/O C/L ALONDRA BLVD (27FT N/O BCR)	DY 478

QUAD-YEAR	ELEV	DESCRIPTION (INCLUDE QUAD AND YEAR IN DESCRIPTION)	BM NUMBER
BASELINE (1990)	75.121	L&T IN W CB 15FT W/O C/L LEAHY AVE & 80FT N/O C/L ALONDRA BLVD (14FT N/O BCR)	DY 479
BASELINE (1990)	71.731	L&T 2FT W CB RET NW COR RYON AVE & ALONDRA BLVD 38FT N & 32FT W C/L INT	DY 763
BASELINE (1990)	73.595	L&BN S CB ALONDRA BLVD 6IN E CB RET @ SE COR ALONDRA BLVD & PACIFIC AVE 70FT W PERR	DY 765
BASELINE (1990)	68.544	L & SPK 4FT E CB RET @ NE COR CLARK AVE & ALONDRA BLVD	DY 766
BASELINE (1990)	68.320	L&T C/L INT PITTS AVE & ALONDRA BLVD	DY 769
BASELINE (1990)	108.324	L&SPK IN WK 55FT N/O C/L COLE ST (TO THE WEST) & 50FT W/O C/L PARAMOUNT BLVD MKD (0-31)	DY 773
BASELINE (1990)	104.780	L&T 14FT E C/L PARAMOUNT BLVD 11FT N C/L SPRINGER ST PROD IN CONC PVMT	DY 777
BASELINE (1990)	103.878	L&T IN CONC 14FT E C/L PARAMOUNT BLVD 4FT N C/L QUILL DR PROD	DY 778
BASELINE (1990)	90.338	L & T 1FT N BCR @ NE COR PARAMOUNT BLVD & ADOREE AVE 58FT N & 38FT E C/L INT	DY 779
BASELINE (1990)	82.506	CS MON 16FT W & 5FT S INT PARAMOUNT BLVD & GARDENDALE ST	DY 783
BASELINE (1990)	77.706	L & T 10FT S BCR INTO CB RET @ NE COR PARAMOUNT BLVD & CENTURY BLVD 2FT N & 41FT E C/L INT	DY 791
BASELINE (1990)	76.227	BT SPK 1FT S BCR @ SW COR PARAMOUNT BLVD & PEARLE ST 32FT S & 38FT W C/L INT MKD (H-110)	DY 792
BASELINE (1990)	75.474	BT SPK BCR @ SW COR PARAMOUNT BLVD & HOWE ST 30FT S & 38FT W C/L INT	DY 793
BASELINE (1990)	71.487	L & T IN CB 38FT W C/L PARAMOUNT BLVD ON THIRD ST C/L PROD	DY 795
BASELINE (1990)	68.482	L&T W CB PARAMOUNT BLVD 2FT N CB RET @ NW COR MADISON ST & PARAMOUNT BLVD	DY 799
BELLFLWR (1990)	65.515	L&T E CB 5FT N BCR @ NE COR PARAMOUNT BLVD & 70TH ST 57FT N & 33FT E C/L INT	DY 803
BELLFLWR (1990)	65.202	CITY OF LONG BEACH MON IN WELL 6IN DN @ OR NR C/L INT PARAMOUNT BLVD & 70TH ST (USE W EDGE) MKD (1961)	DY 804

QUAD-YEAR	ELEV	DESCRIPTION (INCLUDE QUAD AND YEAR IN DESCRIPTION)	BM NUMBER
BASELINE (1990)	157.675	U S E D L&N W END N HDWL LA RIVER BRIDGE NO 2305 ON SLAUSON AVE 29FT N/O C/L SLAUSON AVE	DY 855
BASELINE (1990)	73.470	L&T IN S CB ALONDRA BLVD 1FT E INTO RET 68FT W C/L WOODRUFF AVE & 38FT S/O C/L ALONDRA BLVD	DY 960
BASELINE (1990)	125.683	RDBM TAG N CB 1FT E BCR @ NE COR PARAMOUNT BLVD & FLORENCE AVE 40FT N & 68FT E C/L INT	DY 1299
BASELINE (1990)	124.365	CS BR CAP CONC MON IN WELL @ C/L INT PARAMOUNT BLVD & FLORENCE AVE	DY 1386
BASELINE (1990)	127.087	L & BRAD CTR CB RET SE COR LUBEC ST & PARAMOUNT BLVD 25FT S & 52FT E C/L INT	DY 1387
BASELINE (1990)	127.305	L & BRAD CTR CB RET NE COR LUBEC ST & PARAMOUNT BLVD 27FT N & 52FT E C/L INT	DY 1388
BASELINE (1990)	130.241	L&BN W CB PARAMOUNT BLVD @ NLY P L HSE NO 9603 33FT W/O C/L PARAMOUNT BLVD	DY 1389
BASELINE (1990)	131.723	L & T CONC CB @ BCR SE COR SUVA ST & PARAMOUNT BLVD 48FT S & 38FT E C/L INT MKD (BM)	DY 1390
BASELINE (1990)	134.141	L & T IN CONC CB @ BCR @ SW COR GALLATIN RD & PARAMOUNT BLVD 53FT S & 38FT W C/L INT	DY 1392
BASELINE (1990)	138.375	SQ HD SPK W CB OF SERVICE RD OF PARAMOUNT BLVD 12FT N C/L PROD BROOKGREEN RD	DY 1394
BASELINE (1990)	139.325	L&BR E CB 1FT S/O BCR @ SE COR PARAMOUNT BLVD & VISTA DEL ROSA SERVICE ISLAND 40FT E & 50FT S C/L INT	DY 1395
BASELINE (1990)	141.886	CS MON IN WELL 8IN DN ON C/L TELEGRAPH RD 20FT WLY C/L PARAMOUNT BLVD MKD (BELL K4 1941)	DY 1397
BASELINE (1990)	143.611	RAM NAIL IN N CB TELEGRAPH RD 16FT E/O PP NO 14630Y 38FT N/O C/L TELEGRAPH RD & 110FT W/O C/L CRIDER AVE	DY 1400
BASELINE (1990)	151.584	L&T IN N CB TELEGRAPH RD 4FT E OF CB RET @ NE COR SLAUSON AVE 40 FT N & 105FT E OF C/L INT	DY 1402
BASELINE (1990)	58.454	L&T CTR CB RET SW COR ASHWORTH ST & CLARK AVE 28FT S & 34FT W/O C/L INT	DY 1438
LAKESWOOD (1990)	53.769	L&T 7FT W BCR @ NW COR SOUTH ST & CLARK AVE 52FT N & 60FT W C/L INT	DY 1442
LAKESWOOD (1990)	52.817	CS BR CAP MON IN WELL @ C/L INT SOUTH ST & CLARK AVE (USE NW COR)	DY 1443

QUAD-YEAR	ELEV	DESCRIPTION (INCLUDE QUAD AND YEAR IN DESCRIPTION)	BM NUMBER
BELLFLWR (1990)	65.174	L&BR @ NW COR ARTESIA AVE & BELLFLOWER BLVD 5FT W CTR CB RET 43FT N & 43FT W C/L INT	DY 1499
BASELINE (1990)	139.872	L&T N CB SLAUSON AVE @ WLY END OF CURVE 42FT N C/L SLAUSON AVE & 300FT E BOXFORD AVE (13FT W/O W END C B)	DY 1561
BASELINE (1990)	148.334	L&T N CB SLAUSON AVE 2FT E CB RET @ NE COR GARFIELD AVE 38FT N & 65FT E C/L INT	DY 1566
BASELINE (1990)	152.439	L & BN IN S CB SLAUSON AVE 3FT N PP NO 666256E 0.2MI E GARFIELD AVE 32FT E/O DR TO BLDG NO 7000	DY 1567
BASELINE (1990)	158.040	RD MON IN WELL W/COVER ON C/L SLAUSON AVE 25FT W C/L GREENWOOD AVE (USE SE EDGE)	DY 1569
BASELINE (1990)	152.028	L&T IN S CB TELEGRAPH RD 5FT6IN E/O CB RET @ SE COR SLAUSON AV 40FT S & 48FT E OF C/L INT	DY 1573
BASELINE (1990)	156.901	RD MON IN WELL C/L INT GAGE AVE & SLAUSON AVE	DY 1574
SO GATE (1990)	138.619	L&BN IN CB 1FT W/O BCR @ SW COR FLORENCE AVE & BEAR AVE 40FT S & 31FT W/O C/L INT	DY 1734
BASELINE (1990)	68.461	L&T E CB 15FT S CB RET @ SE COR FAULKNER AVE & COMPTON BLVD 15FT E & 54FT S/O C/L INT	DY 1933
BASELINE (1990)	66.948	CS MON C/L SAN JOSE AVE & APPROX N P/L OF 1ST ALLEY S COMPTON 130FT S C/L INT SAN JOSE AVE & COMPTON BLVD (USE N EDGE)	DY 1937
BASELINE (1990)	67.025	LAFC MON @ C/L INT COMPTON BLVD & SAN ANTONIO AVE MKD (L A CO FLOOD CONT)	DY 1940
BASELINE (1990)	87.971	RDBM TAG IN EAST ABUT. @ NE COR OF COMPTON BLVD BRIDGE OVER LA RIVER 1FT N/O CB FACE 24FT N C/L	DY 1941
SO GATE (1990)	69.505	L&SPK E CB GIBSON AVE 16FT S CB RET @ SE COR GIBSON AVE & SAN VINCENTE ST 42FT S & 20FT E/O C/L INT	DY 1959
SO GATE (1990)	69.309	L&SPK E CB GIBSON AVE 14FT S CB RET @ SE COR GIBSON AVE & SAN MIGUEL ST 40FT S & 20FT E/O C/L INT	DY 1960
BASELINE (1990)	83.296	L & T 6FT W BCR @ SW COR PARAMOUNT BLVD & GARDENDALE ST 35FT S & 59FT W C/L INT	DY 2041
BASELINE (1990)	66.136	L&T CTR CB RET @ SE COR ALONDRA BLVD & DOWNEY AVE 48FT S & 47FT E C/L INT	DY 2343

QUAD-YEAR	ELEV	DESCRIPTION (INCLUDE QUAD AND YEAR IN DESCRIPTION)	BM NUMBER
BASELINE (1990)	72.882	L & T 30FT E C/L ALAMEDA ST & 33FT S OF C B ON C/L ORIS ST PROD	DY 2351
BASELINE (1990)	70.627	L&T 30FT E/O C/L ALAMEDA ST ON C/L PROD MEALY ST	DY 2352
BASELINE (1990)	68.426	L & BN 28FT N C/L COMPTON BLVD & 60FT W C/L ALAMEDA ST (E BBL) 13FT E/O E RAIL SPRR	DY 2356
BASELINE (1990)	68.629	L & BN 28FT S C/L COMPTON BLVD & 70FT W C/L ALAMEDA ST (E BBL) 5FT E/O E RAIL SPRR	DY 2357
BASELINE (1990)	65.228	L&T 25FT W C/L ALAMEDA ST E BARREL ON C/L PROD LAUREL ST TO THE E	DY 2358
BASELINE (1990)	63.888	STEEL SPK WITH (X) ON TOP CTR S BCR TO DRWY OF COMPTON STREET DEPT NO 458 S ALAMEDA ST 29FT E C/L E BARREL 180FT N MYRRH ST	DY 2360
BASELINE (1990)	64.937	CS MON IN WELL 10IN DN 50FT E C/L SPRR 27FT W C/L ALAMEDA ST E BARREL & 18FT S C/L PROD MYRRH ST TO THE E MKD (BM 5-22A)	DY 2361
BASELINE (1990)	64.430	L&BN W CB ALAMEDA ST E BARREL 12FT E OF 5TH TELEGRAPH POLE N/O ALONDRA BLVD 500FT S/O MYRRH ST 25FT W/O C/L	DY 2362
BASELINE (1990)	62.467	L&T E CB ALAMEDA ST W BBL ON C/L PROD RAYMOND AVE 27FT E/O C/L ALAMEDA ST	DY 2365
BASELINE (1990)	61.865	L&T E CB ALAMEDA ST W BBL 27FT E/O C/L ON C/L PROD TICHENOR ST	DY 2367
BASELINE (1990)	61.615	L&T E CB ALAMEDA ST W BBL C/L PROD CALDWELL ST 26FT E/O C/L ALAMEDA ST	DY 2368
BASELINE (1990)	61.236	L&T E CB ALAMEDA ST W BBL 27FT E/O C/L ON C/L PROD JOHNSON ST	DY 2369
BASELINE (1990)	61.012	L&T E CB ALAMEDA ST W BBL 27FT E/O C/L ON C/L PROD BENNET ST	DY 2370
BASELINE (1990)	59.695	STD DISC TOP OF CONC POST 3FT N OF MILE POST NO 495 SPRR & 38FT E C/L SPRR 2FT BELOW TOP OF RAIL & 0.15MI S/O GREENLEAF BLVD 113FT E/O C/L ALAMEDA ST MKD (Q 768 1945)	DY 2374
BASELINE (1990)	62.819	L&BN E CB ALAMEDA ST @ ANGLE POINT OF WINGWALL @ NE COR BRIDGE NO 774 OVER COMPTON CREEK 22FT E C/L & 174FT N C/L CREEK & 400FT S ARTESIA BLVD	DY 2377

QUAD-YEAR	ELEV	DESCRIPTION (INCLUDE QUAD AND YEAR IN DESCRIPTION)	BM NUMBER
BASELINE (1990)	58.078	FC BR CAP @ S END OF WINGWALL @ NE COR SPRR BRIDGE 90FT E C/L ALAMEDA ST & 450FT S C/L ARTESIA BLVD MKD (RBM 44-33)	DY 2378
BASELINE (1990)	62.856	FC BR CAP 5FT S ANGLE POINT WINGWALL SW COR BRIDGE NO 774 ON ALAMEDA ST OVER COMPTON CREEK 28FT W C/L & 600FT S ARTESIA BLVD MKD (BM 44-33)	DY 2379
BASELINE (1990)	51.339	LAFC BR CAP E CB ALAMEDA ST 22FT E/O C/L OPP OLD ENT DOMINGUEZ SEMINARY MKD (RBM 44-32)	DY 2380
BASELINE (1990)	52.744	FC BR CAP SE COR 8X8FT CONC VALVE BOX 58FT E C/L SPRR & 125FT E/O C/L ALAMEDA ST OPP OLD ENT TO DOMINQUEZ SEMINARY MKD (BM 44-32)	DY 2381
BASELINE (1990)	50.452	L&BN W CB ALAMEDA ST 22FT W C/L OPP NE COR 8FT CHAIN LINK FENCE AROUND SO CAL EDISON SUB-STATION PROPERTY 650FT N DOMINGUEZ JCT	DY 2382
BASELINE (1990)	46.631	L&BN W CB ALAMEDA ST W BBL 22FT W/O C/L & 530FT S/O C/L LONG BEACH LINE PERR 37FT N/O TP NO 16767R	DY 2384
BASELINE (1990)	45.837	L&BN E CB ALAMEDA ST W BBL 22FT E/O C/L & 1285FT S/O C/L LONG BEACH LINE PERR 0.25MI N/O LAUREL PARK RD	DY 2385
BASELINE (1990)	42.927	STD USGS DISC IN CONC POST 3IN UP 30FT E C/L SPRR 55FT W C/L ALAMEDA ST E BARREL 0.5MI NLY DEL AMO BLVD 4FT N TP#LU MKD (P 768 1945)	DY 2388
BASELINE (1990)	41.375	L&BN E CB ALAMEDA ST W BARREL 22FT E/O C/L 0.1MI N/O VISTA INDUSTRIA OPP BLDG NO 19722	DY 2389
BASELINE (1990)	40.914	CUT SPK E CB ALAMEDA ST W BARREL 22FT E C/L & 0.25MI N/O DEL AMO BLVD 105FT S/O C/L VISTA INDUSTRIA	DY 2390
BASELINE (1990)	32.683	L&SPK E CB ALAMEDA ST W BARREL 22FT E C/L 275FT N/O C/L EL PRESIDIO ST 1400FT S DEL AMO BLVD	DY 2393
BASELINE (1990)	32.116	L&BN E CB ALAMEDA ST W BARREL 22FT E C/L 23FT PP NO 577803R 900FT N OF DOMINGUEZ ST	DY 2394
BASELINE (1990)	31.685	L & T NR MCR @ SE COR ALAMEDA ST & DOMINGUEZ ST 22FT S & 45FT E/O C/L INT E BAR	DY 2414
BASELINE (1990)	31.375	L & T IN S CB 20FT S C/L DOMINGUEZ ST 1FT W/O DRWY TO HSE NO 2638 DOMINGUEZ ST 0.10MI W/O PROSPECT AVE	DY 2415

QUAD-YEAR	ELEV	DESCRIPTION (INCLUDE QUAD AND YEAR IN DESCRIPTION)	BM NUMBER
BASELINE (1990)	32.022	L&T S CB DOMINGUEZ ST 25FT W DRWY HSE NO 2738 DOMINGUEZ ST (FRONT FIRE PLUG) 0.15MI W/O SANTA FE AVE	DY 2416
BASELINE (1990)	32.779	L & S IN W CB 3FT S BCR @ SW COR DOMINGUEZ ST & SANTA FE AVE 38FT S & 40FT W C/L INT	DY 2417
BASELINE (1990)	67.343	LACS MON 30FT N & 70FT E C/L INT ALONDRA BLVD & CLARK AVE MKD(BM 6-8 1951)	DY 2596
BASELINE (1990)	73.236	L&T N CB 4FT W CB RET @ NW COR ALONDRA BLVD & BLAINE AVE	DY 2597
BASELINE (1990)	73.370	L&T IN N CB 3FT E CB RET @ NE COR ALONDRA BLVD & BLAINE AVE	DY 2598
BASELINE (1990)	74.081	L&BN S CB 1FT W CB RET @ SW COR ALONDRA BLVD & BELLFLOWER BLVD 38FT S & 46FT W C/L INT	DY 2600
BASELINE (1990)	72.970	L&T N CB 1FT E CB RET @ NE COR ALONDRA BLVD SERVICE RD & DUMONT AVE	DY 2616
BASELINE (1990)	73.512	L&T N CB 1FT E OF CB RET @ NE COR ALONDRA BLVD SERVICE RD & LEIBACHER AVE	DY 2617
BASELINE (1990)	44.077	L & BN 1FT E BCR @ NE COR CARSON ST & 1ST ALLEY W WOODRUFF AVE 40FT N & 400FT W C/L INT	DY 2678
BASELINE (1990)	44.579	L & T 2FT W BCR @ NW COR WOODRUFF AVE & CARSON ST 42FT N & 79FT W C/L INT MKD (BM)	DY 2679
BASELINE (1990)	39.799	RDBM TAG S CB 1FT W BCR @ SW COR BELLFLOWER BLVD & CARSON ST 38FT S & 70FT W C/L INT	DY 2704
BASELINE (1990)	39.579	L&BRAD IN CTR CB RET @ NE COR BELLFLOWER BLVD & CARSON ST 50FT N & 50FT E/O C/L INT	DY 2706
BASELINE (1990)	22.531	L&N S CB SPRING ST (N SERVICE RD) C/L LOMINA AVE PROD 13FT S/O C/L N SERVICE RD SPRING ST	DY 2941
BASELINE (1990)	21.798	L & N IN CTR ISL S END PARKWAY SAN ANSELINA AVE 28FT N C/L SPRING ST SERVICE RD	DY 2942
BASELINE (1990)	22.656	L & NAIL IN SO CB SERVICE RD SPRING ST ON C/L PROD CHATWIN AVE 54FT N/O C/L SPRING ST	DY 2943
BASELINE (1990)	22.256	L & BN IN N CB 1FT E BCR 54FT N & 81FT E C/L INT SPRING ST & BELLFLOWER BLVD	DY 2944
BASELINE (1990)	21.344	LACS MON IN WELL 14IN DN W/ CITY OF L B COVER @ C/L INT SPRING ST & BELLFLOWER BLVD (N EDGE)	DY 2946

QUAD-YEAR	ELEV	DESCRIPTION (INCLUDE QUAD AND YEAR IN DESCRIPTION)	BM NUMBER
BASELINE (1990)	104.256	L & T 18FT S C/L SPRINGER ST & 70FT W C/L PARAMOUNT BLVD 8FT W BCR @ SW COR IN CB	DY 3168
BASELINE (1990)	110.224	L & B 1FT W BCR @ SW COR DE PALMA ST & PARAMOUNT BLVD 18FT S & 74FT W C/L INT	DY 3173
BASELINE (1990)	111.240	L & BRAD 1FT W BCR @ NW COR CLETA ST & PARAMOUNT BLVD 18FT N & 75FT W C/L INT	DY 3174
BASELINE (1990)	112.061	L&T 2FT W/O BCR @ SW COR BROOKMILL RD & PARA- MOUNT BLVD 18FT S & 77FT W/O C/L INT	DY 3175
BASELINE (1990)	115.722	LACS MON IN WELL @ C/L INT 2ND ST & PARAMOUNT BLVD (USE S EDGE)	DY 3182
BASELINE (1990)	123.851	L & T 2FT S BCR @ SW COR PARAMOUNT BLVD & FARM ST 55FT S & 38FT W C/L INT	DY 3183
BELLFLWR (1990)	52.205	L&BN E SIDE CONC BASE S PEDESTRIAN GATE POST OF WIRE FENCE 50FT W/O C/L PARAMOUNT BLVD 6FT NE COR EDISON CO TRANSFORMER ON THE RICHFIELD OIL CO PROPERTY 5900 BLOCK OF PARAMOUNT BLVD 0.4MI S/O C/L 63RD ST	DY 3634
BASELINE (1990)	53.881	L & BN 1FT W BCR @ NW COR LAKEWOOD BL & SOUTH ST 40FT N & 80FT W C/L INT	DY 3639
BASELINE (1990)	56.529	L&BN S CB ALLINGTON ST 75FT W/O C/L 28FT S/O C/L WOODRUFF AVE 1FT W/O BCR	DY 3676
BASELINE (1990)	56.768	L&BR W CB 3FT N BCR @ NW COR ALLINGTON ST & CANEHILL AVE 75FT N & 18FT W C/L INT	DY 3679
BASELINE (1990)	57.321	RDBM TAG S CB 1FT E BCR @ SE COR ALLINGTON ST & CANEHILL AVE 30FT S & 60FT E C/L INT	DY 3680
BASELINE (1990)	55.792	CS MON C/L INT PALO VERDE AVE & ALLINGTON ST	DY 3681
BASELINE (1990)	49.625	CSBM MON IN WELL 88FT S/O C/L SOUTH ST 9FT E/O C/L PALO VERDE AVE MKD (BM 9-9 1951)	DY 3686
LAKWOOD (1990)	51.359	L&BN W CB 15FT N BCR @ NW COR SOUTH ST & SNOWDEN AVE 120FT N & 18FT W C/L INT	DY 3690
LAKWOOD (1990)	54.082	L&BN 1FT W OF BCR @ SW COR OCANA AVE & SERVICE RD SOUTH ST 80FT S & 48FT W C/L INT	DY 3696
LAKWOOD (1990)	55.199	L&BN 1FT W BCR @ SW COR COLDBROOK AVE & SERVICE RD SOUTH ST 80FT S & 40FT W C/L INT	DY 3697

QUAD-YEAR	ELEV	DESCRIPTION (INCLUDE QUAD AND YEAR IN DESCRIPTION)	BM NUMBER
LAKWOOD (1990)	55.058	L & BN 42FT S C/L SOUTH ST & 15FT E C/L PROD ADENMOOR AVE	DY 3698
BASELINE (1990)	58.008	L&T 1FT S CB RET @ SW COR ASHWORTH ST & WOODRUFF AVE 45FT S & 40FT W/O C/L INT	DY 3702
BASELINE (1990)	79.774	BR CAP @ S END W CONC BANNISTER @ MAIN ENT TO THE (FRANCIS WILLARD SCHOOL) 114FT E C/L ALAMEDA ST E BBL & 98FT S C/L EL SEGUNDO BLVD MKD (W 615 1941)	DY 3741
BASELINE (1990)	75.467	CS MON IN WELL 27FT E C/L ALAMEDA ST W BBL & 3FT S C/L EL SEGUNDO BLVD	DY 3742
BASELINE (1990)	178.696	DISC IN S WALL 2FT E SW COR BLDG 3FT UP @ NE COR RANDOLPH ST & E BBL ALAMEDA ST 8FT N/O N CB & 8FT E/O E CB	DY 3806
BASELINE (1990)	154.063	L&BN 1FT W BCR @ NW COR W BBL ALAMEDA ST & FLORANCE AVE 30FT N & 60 FT W/O C/L INT	DY 3823
BASELINE (1990)	157.163	CS MON SET VERTICAL IN COR BLDG 2FT UP 3FT N COR 53FT N/O C/L FLORENCE AVE 86FT E/O E CB ALAMEDA ST (E BARREL)	DY 3825
BASELINE (1990)	178.957	CS MON C/L SLAUSON AVE 14FT W OF W RAIL SPRR 20FT E C/L ALAMEDA ST MKD (WATTS H-2A 1939)	DY 3836
SO GATE (1990)	155.408	L & BN 2FT W BCR @ SW COR SANTA FE AVE & FLORENCE AVE 35FT S & 48FT W/O C/L INT	DY 4131
SO GATE (1990)	155.273	L&T IN CB 35FT S/O C/L FLORENCE AVE & ON C/L PROD RUGBY AVE	DY 4133
SO GATE (1990)	151.619	L&BN IN CB 30FT S/O C/L FLORENCE AVE 10FT W/O C/L PROD RUGBY AVE	DY 4136
SO GATE (1990)	150.900	L & BN 2FT N BCR @ SW COR MOUNTAIN VIEW AVE & FLORENCE AVE 58FT S & 15FT W C/L INT	DY 4137
BASELINE (1990)	50.860	RDBM TAG 1.5FT E BCR @ NE COR PARAMOUNT BLVD & SOUTH ST 40FT N & 75FT E C/L INT	DY 4567
BASELINE (1990)	67.366	L & SPK 3FT E BCR @ SE COR COMPTON BLVD & BRADFIELD AVE 40FT S & 42FT E C/L INT	DY 4571
BASELINE (1990)	65.889	CITY OF COMPTON MON IN WELL 18IN DP C/L COMPTON BLVD & C/L PROD BRADFIELD AVE N	DY 4572
BASELINE (1990)	66.108	CITY OF COMPTON MON IN WELL 12IN DP @ C/L INT COMPTON BLVD & LONG BEACH BLVD 5FT N OF MON TO THE S	DY 4574

QUAD-YEAR	ELEV	DESCRIPTION (INCLUDE QUAD AND YEAR IN DESCRIPTION)	BM NUMBER
BASELINE (1990)	164.867	L&T S CB SLAUSON AVE 192FT W & 21FT S C/L INT DOWNEY RD & SLAUSON AVE FRONT OF POWER POLE	DY 4665
BASELINE (1990)	162.162	CS MON IN WELL 8IN DN 2FT S & 4FT W/O C/L INT SLAUSON AVE & EVERETT AVE MKD (LA CO SUR CONTROL SYS TRAVERSE STA WATTS L-2B RE4233)	DY 4666
BASELINE (1990)	57.552	CS MON IN WELL 8IN DN ON SW COR CLARK AVE & ASHWORTH ST 38FT S & 30FT W C/L INT MKD (BM 32-3)	DY 4961
BASELINE (1990)	46.623	RDBM TAG W CB 6FT N BCR OF ISLAND @ NW COR PARAMOUNT BLVD & HARDWICK ST 45FT N & 40FT W C/L INT	DY 4962
BASELINE (1990)	46.779	RDBM TAG W CB 2FT S BCR OF ISLAND @ SW COR PARAMOUNT BLVD & HARDWICK ST 37FT S & 43FT W C/L INT	DY 4963
BASELINE (1990)	43.344	CS MON IN WELL 10IN DN ON SW COR DEL AMO BLVD & & PALO VERDE AVE 23FT W & 85FT S C/L INT MKD (BM 9-10)	DY 4993
BASELINE (1990)	44.401	L&T E CB 17FT S BCR @ SE COR DEL AMO BLVD & PALO VERDE AVE 90FT S & 30FT E C/L INT MKD (BM)	DY 4994
BASELINE (1990)	55.029	USC&GS BR CAP E END CONC BRIDGE 1000FT W LAKEWOOD BLVD NR CTR GOLF COURSE 50FT N C/L CARSON ST MKD (C780 1946)	DY 5000
BASELINE (1990)	55.066	SQ HD BT E END HDWL CONC BRIDGE 1000FT W LAKEWOOD BLVD NR CTR GOLF COURSE 50FT S C/L CARSON ST MKD (U)	DY 5001
BELLFLWR (1990)	67.093	L&BRAD W CB 1FT N BCR @ NW COR CARSON ST & DEEBOYER AVE 90FT N & 18FT W C/L INT MKD (BM)	DY 5006
BELLFLWR (1990)	62.135	RDBM TAG N CB 1FT E BCR @ NE COR CHERRY AVE & BIXBY AVE 30FT N & 88FT E SPLIT OF CBS	DY 5008
BELLFLWR (1990)	62.076	RDBM TAG S CB 3FT E BCR @ SE COR CHERRY AVE & BIXBY AVE 30FT S & 91FT E SPLIT OF CBS	DY 5009
BASELINE (1990)	47.606	L&T S CB 3FT W BCR @ SW COR PALO VERDE AVE & CANDLEWOOD ST 68FT W & 38FT S C/L INT MKD (BM)	DY 5017
BASELINE (1990)	46.454	L&BR E CB 1FT N BCR @ NE COR PALO VERDE AVE & EBERLE ST 50FT N & 30FT E C/L INT MKD (BM)	DY 5019
BASELINE (1990)	38.608	CS MON IN WELL 10IN DN @ OR NR C/L INT PALO VERDE AVE & ARBOR RD (USE S EDGE)	DY 5020

QUAD-YEAR	ELEV	DESCRIPTION (INCLUDE QUAD AND YEAR IN DESCRIPTION)	BM NUMBER
BASELINE (1990)	41.210	L&BN N CB 73FT W BCR @ NW COR PALO VERDE AVE & ARBOR RD 138FT W & 18FT N C/L INT (ALONG FC R/W) CB MKD (LC 28)	DY 5021
BASELINE (1990)	36.064	CS MON IN WELL 12IN DN @ OR NR C/L INT PALO VERDE AVE & CENTRALIA ST (USE W EDGE)	DY 5022
BASELINE (1990)	35.034	CS MON IN WELL 12IN DN @ OR NR C/L INT PALO VERDE AVE & HARVEY WAY	DY 5024
BASELINE (1990)	36.154	L&BN E CB 1FT S BCR @ SE COR PALO VERDE AVE & HARVEY WAY 30FT E & 57FT S C/L INT	DY 5025
BASELINE (1990)	36.432	RDBM TAG W CB 6FT N BCR @ NW COR PALO VERDE AVE & CARSON ST 82FT N & 30FT W C/L INT	DY 5026
BASELINE (1990)	36.377	RDBM TAG E CB 6FT N BCR @ NE COR PALO VERDE AVE & CARSON ST 82FT N & 30FT E C/L INT	DY 5027
BASELINE (1990)	44.808	CS MON FLUSH W/WLK 2FT NW CTR CB RET @ NW COR CARSON ST & WOODRUFF AVE 57FT N & 48FT W C/L INT MKD (K9 RM NO 3)	DY 5029
BASELINE (1990)	42.041	RDBM TAG SO CB N SER RD 54FT N & 615FT W/O INT CARSON ST & CARFAX AVE (FRONT OF HSE NO 6133) ENT TO WATER PUMP HSE	DY 5030
BASELINE (1990)	41.573	RDBM TAG NO CB N SER RD 82FT N & 615FT W/O INT CARSON ST & CARFAX AVE (FRONT OF HSE NO 6133) ENT TO WATER PUMP HSE	DY 5031
BASELINE (1990)	56.053	L&T E CB 1FT S BCR @ SE COR WOODRUFF AVE & ALLINGTON ST 76FT S & 40FT E C/L INT MKD (BM)	DY 5045
BASELINE (1990)	62.497	RDBM TAG 2FT S BCR @ SW COR PARAMOUNT BLVD & WARWOOD RD (W SERVICE RD) 47FT S & 76FT W/O C/L INT	DY 5052
BASELINE (1990)	62.478	RDBM TAG W CB 2FT N BCR @ NW COR PARAMOUNT BLVD & WARWOOD RD (W SERVICE RD) 48FT N & 76FT W/O C/L INT	DY 5053
BASELINE (1990)	60.516	RDBM TAG W CB 2FT S BCR @ SW COR PARAMOUNT BLVD & GREENTOP ST (W SERVICE RD) 46FT S & 76FT W/O C/L INT	DY 5054
BASELINE (1990)	60.238	RDBM TAG W CB 2FT N BCR @ NW COR PARAMOUNT BLVD & GREENTOP ST (W SERVICE RD) 46FT N & 76FT W/O C/L INT	DY 5055

QUAD-YEAR	ELEV	DESCRIPTION (INCLUDE QUAD AND YEAR IN DESCRIPTION)	BM NUMBER
BASELINE (1990)	54.371	RDBM TAG W CB 2FT N BCR @ NW COR PARAMOUNT BLVD & CENTRALIA ST (W SERVICE RD) 47FT N & 76FT W/O C/L INT	DY 5057
BASELINE (1990)	119.671	CS MON CONC FOUNDATION SW LEG TRANSMISSION LINE TOWER NO 26503 33FT E C/L E BBL ALAMEDA ST & 118 FT N C/L SOUTHERN AVE MKD (LC 769 1945)	DY 5771
BASELINE (1990)	113.584	RD MON CONC BASE FORMER RR SIGNL 68FT E C/L W BB ALAMEDA ST & 30FT N C/L TWEEDY BLVD MKD (BM 30)	DY 5773
BASELINE (1990)	102.863	CS MON IN CONC POST 2IN UP 1FT E OF E CB ALAMEDA ST W BBL & 199 N C/L CENTURY BLVD MKD (RE 2177-6) USE SE EDGE	DY 5775
BASELINE (1990)	101.964	CS MON IN CONC POST FL 3FT W OF W CB ALAMEDA ST (E BARREL) 199FT N C/L CENTURY BLVD MKD (A769) USE S EDGE	DY 5776
BASELINE (1990)	91.299	LACE HEX MON IN WELL 32FT E C/L ALAMEDA ST W BBL & 34FT S C/L IMPERIAL HWY	DY 5779
BASELINE (1990)	91.179	L&BN IN CB 10FT S BCR @ SE COR 25FT E/O C/L ALAMEDA ST (W BARREL) & 70FT S/O C/L IMPERIAL HWY MKD (BM)	DY 5780
BASELINE (1990)	63.853	R D MON NR N END CONC HDWL CULV 27FT E C/L MAIN TRACK SPRR 45FT W C/L ALAMEDA ST E BARREL 17FT S C/L PROD RAYMOND ST MKD (BM 19)	DY 5783
BASELINE (1990)	63.694	USC&GS MON NR S END CULV HDWL 10FT W C/L SPRR & 70FT E C/L ALAMEDA ST W BARREL 90FT N C/L PROD CALDWELL ST MKD (T 615 1941)	DY 5784
BASELINE (1990)	54.808	MWD MON 3FT E OF E CB ALAMEDA ST 26FT E C/L & 0.5MI S/O ARTESIA BLVD IN S END CONC CULV OPP GATE NO 18011 MKD (56Z 1933)	DY 5785
BASELINE (1990)	49.212	USC&GS MON NEAR N END SFRR CULV HDWL NO 496.25 18FT W/O C/L SFRR TRACKS 67FT E/O C/L ALAMEDA ST & 450FT S/O C/L INT ALAMEDA ST & PERR MKD (F 52 1926)	DY 5787
BELLFLWR (1990)	64.662	L&T E CB 2FT S BCR @ SE COR ATLANTIC AVE & MYRRH ST 27FT S & 36FT E C/L INT	DY 6120
BELLFLWR (1990)	64.653	L&T W CB 1FT S BCR @ SW COR ATLANTIC AVE & MYRRH ST 26FT S & 36FT W C/L INT	DY 6121
BASELINE (1990)	31.546	CS MON 10IN DN 14FT S & 72FT W C/L INT DOMINGUEZ ST & SANTA FE AVE MKD (BM 8-57 RE 63)	DY 6146

QUAD-YEAR	ELEV	DESCRIPTION (INCLUDE QUAD AND YEAR IN DESCRIPTION)	BM NUMBER
BASELINE (1990)	53.816	BT SPK IN CONC ABUT OF UPRR & SFRR CROSSING OVER LONG BEACH FRWY NR DOMINGUEZ ST 33FT W/O W RAIL SPRR & 8FT N/O N RAIL UPRR	DY 6147
BASELINE (1990)	57.037	CS BR DISK CTR S HDWL W CONC ABUT UPRR BRIDGE OVER LA RIVER 10FT E/O W END HDWL MKD (BM 8-55B 1960)	DY 6148
BASELINE (1990)	57.150	CS BR DISK CTR N HDWL E CONC ABUT 6FT E UPRR BRIDGE OVER LA RIV @ MILE POST 17.13 MKD (BM 8-54B 1960) USE SO EDGE	DY 6150
BASELINE (1990)	43.917	USC & GS DISK 3FT ABOVE GROUND IN E FACE OF W CONC ABUT UPRR BRIDGE OVER LONG BEACH BLVD 1FT S/O N END ABUT & 50FT W/O LONG BEACH BLVD & 60FT S/O C/L 48TH ST MKD (Z-799 1946)	DY 6151
BASELINE (1990)	102.473	4IN BR TABLET IN WELL 18FT N OF S CB LINE PROD SAN ANTONIO DR & 33FT E OF W CB LINE PROD LONG BEACH BLVD MKD (LA COUNTY SURVEY CONTROL SYSTEM TRAVERSE STATION CLEARWATER B-8A RE 2177) @ OR NEAR C/L INT	DY 6152
BASELINE (1990)	88.063	4IN BR TABLET IN WELL 40FT E OF W CB PROD LONG BEACH BLVD & 48FT S/O N CB PROD WARDLOW RD MKD (LA COUNTY SURVEY CONTROL SYSTEM TRAVERSE STATION CLEARWATER B-10 RE 2177) @ OR NEAR C/L INT TO THE E	DY 6153
BASELINE (1990)	24.178	L B CITY MON IN WELL IN LEFT TURN LANE OF NO BBL SPRING ST @ NE COR SPRING ST & LAKEWOOD BLVD 8FT N/O N CB MEDIAN ISL 3FT W/O END ISL 72FT E/O C/L LAKEWOOD BLVD ON C/L SPRING ST MKD (CITY ENG MON-USE N EDGE)	DY 6155
BASELINE (1990)	21.603	L&BRAD IN CHIS SQ W CB 6FT S BCR @ SW COR SPRING ST & SNOWDEN AVE 100FT S & 18FT W C/L INT	DY 6158
BASELINE (1990)	23.032	RDBM TAG S CB 1FT E BCR @ SE COR SPRING ST & SNOWDEN AVE 45FT S & 48FT E C/L INT	DY 6159
BASELINE (1990)	139.471	MON IN WELL 12IN DN 57FT N/O & 41FT E/O C/L INT OF SLAUSON AVE & ALAMO AVE MKD (BM 4-21 1951)	DY 6170
BASELINE (1990)	150.751	CS MON IN WELL 10IN DN 41FT NLY S CB SLAUSON AVE & 7FT WLY E CB FLORA AVE MKD (BELL 2-A 1938)	DY 6723
BASELINE (1990)	148.091	L&BN IN CB @ NW COR SLAUSON AVE & GARFIELD AVE 66FT N & 38FT W/O C/L INT (1FT N/O BCR)	DY 6727

QUAD-YEAR	ELEV	DESCRIPTION (INCLUDE QUAD AND YEAR IN DESCRIPTION)	BM NUMBER
BASELINE (1990)	165.222	CS MON 15IN DN ON C/L BOYLE AVE (STATE ST) 17FT S C/L SLAUSON AVE MKD (WATTS K-2A RE 4233)	DY 6738
BASELINE (1990)	173.279	CS MON 8IN DN ON C/L MILES AVE (SOTO ST) 14FT S C/L SLAUSON AVE MKD (WATTS J-2E 1938)	DY 6740
BASELINE (1990)	149.217	L&BN W CB @ NW COR ATLANTIC BLVD & SLAUSON AVE 35FT W & 97FT N C/L INT	DY 6749
BASELINE (1990)	69.837	BT SPK 9FT S BCR @ SE COR 73FT S & 24FT E C/L IN ROSECRANS AVE & ALAMEDA ST (E BBL)	DY 6976
BASELINE (1990)	73.460	CS MON FL IN C B ON NE COR ALAMEDA ST (E BARREL) & EUCLID AVE 45FT N & 27FT E C/L INT MKD (BM 5-19A 1964)	DY 6977
BASELINE (1990)	82.002	L&BN E CB 1FT S BCR @ SE COR ALAMEDA ST E BBL & DIXON AV 40FT S & 20FT E APPROX C/L INT MKD (BM)	DY 6978
BASELINE (1990)	82.498	RDBM TAG IN CONC APRON ON SE COR ALAMEDA ST E BB & DIXON AVE 15FT S & 50FT E APPROX C/L INT MKD (BM)	DY 6979
BASELINE (1990)	95.685	L&BN W CB 1FT N BCR @ NW COR ALAMEDA ST W BBL & SANTA ANA BLVD 30FT W & 105FT N APPROX C/L INT	DY 6980
BASELINE (1990)	72.690	CS MON IN WELL 10IN DN @ NW COR ALONDRA BLVD & BELLFLOWER BLVD 33FT N & 73FT W/O C/L INT MKD (BM 6-7 1951)	DY 7028
BASELINE (1990)	68.987	CS MON FL @ SE COR ALONDRA BLVD & LAKEWOOD BLVD 42FT S & 187FT E C/L INT MKD (BM 6-9A 1958)	DY 7029
BASELINE (1990)	77.827	CS MON FL IN C B @ NW COR PARAMOUNT BLVD & CEN- TURY BLVD 90FT N & 39FT W C/L INT MKD (BM 7-2A 1961)	DY 7030
BASELINE (1990)	80.505	CS MON FL IN C B ON NW COR PARAMOUNT BLVD & HARDING AVE 40FT N & 41FT W C/L INT MKD (BM 7-3A 1961)	DY 7031
BASELINE (1990)	79.796	CS MON 10IN DN ON NW COR HARDING AVE & PARAMOUNT BLVD 95FT N & 44FT W C/L INT MKD (BELL E 11A 1960) USE E EDGE	DY 7032
BASELINE (1990)	105.539	CS REF MON IN WELL 40FT W/O C/L PARAMOUNT BLVD & 42FT S C/L PROD ALAMEDA ST MKD (BELL G 9 RM-1)	DY 7033
BASELINE (1990)	105.570	CS REF MON IN WELL 40FT W/O C/L PARAMOUNT BLVD & 38FT N/O C/L PROD ALAMEDA ST MKD (BELL G 9 RM2)	DY 7034

QUAD-YEAR	ELEV	DESCRIPTION (INCLUDE QUAD AND YEAR IN DESCRIPTION)	BM NUMBER
SO GATE (1980)	67.135	CS MON IN WELL 12IN DN @ C/L INT GIBSON AVE & SAN LUIS ST MKD (CO SUR MON RE 329) USE E EDGE	CY 7038
BASELINE (1990)	65.887	CS MON IN WELL 12IN DN @ C/L INT SAN LUIS ST & LIME AVE MKD (CO SUR MON RE 329)	DY 7039
BASELINE (1990)	30.429	L&BN 1FT S BCR @ SE COR CONANT ST & PALO VERDE AVE 30FT E & 55FT S C/L INT	DY 7056
BASELINE (1990)	30.473	L&T 1FT E BCR @ NE COR CONANT ST & PALO VERDE AVE 65FT E & 20FT N C/L INT	DY 7057
BASELINE (1990)	22.976	CS MON IN HAND HOLE @ C/L INT SPRING ST & CLARK AVE (USE W EDGE)	DY 7059
BASELINE (1990)	23.153	L B CITY MON IN WELL IN LEFT TURN LANE @ NW COR LAKEWOOD BLVD & SPRING ST 8FT W/O W CB MEDIAN ISL 56FT N/O S END ISL 113FT N/O SPRING ST ON C/L LAKEWOOD BLVD (USE W EDGE)	DY 7060
BASELINE (1990)	35.110	L B CITY MON FL IN CB @ NW COR SPRING ST & REDONDO AVE 40FT N & 45FT W/O C/L INT 3FT W/O BCR MKD (RE 3111-BM-8-40B C L B 1963)	DY 7061
BASELINE (1990)	35.103	L&BR IN CHIS SQ TOP OF CB @ SW COR SPRING ST & REDONDO AVE 41FT S & 55FT W C/L INT	DY 7062
BASELINE (1990)	46.777	LB CITY MON 14IN DN @ NELY COR SPRING ST & TEMPLE AVE 40FT NLY & 35FT ELY C/L INT MKD (541)	DY 7063
BASELINE (1990)	47.879	L&N N CB SPRING ST 37FT W OF BCR @ NW COR SPRING ST & TEMPLE AVE 80FT W & 40FT N C/L INT	DY 7064
BASELINE (1990)	75.384	L&BN E CB 1FT S BCR @ NE COR CHERRY AVE & SPRING ST 72FT N & 50FT E C/L INT MKD (BM)	DY 7066
BASELINE (1990)	69.484	L B CITY MON IN WELL 10IN DN IN WK @ NE COR WARDLOW RD & ORANGE AVE 33FT E & 51FT N/O C/L INT MKD (BM NO 87)	DY 7067
BASELINE (1990)	68.926	LB CITY MON 21IN DN @ C/L INT ORANGE AVE & WARDLOW RD MKD (BM-USE W EDGE)	DY 7068
BASELINE (1990)	87.125	C L B MON IN WELL @ C/L INT WARDLOW RD & ATLANTIC AVE(S MON OF 2 MON) USE S EDGE @ ARROW	DY 7069
BASELINE (1990)	88.178	RAMSET W CB LONG BEACH BLVD 35FT N BCR 30FT W & 120FT N C/L INT WARDLOW RD & LONG BEACH BLVD	DY 7070
BASELINE (1990)	110.381	CS TRI MON 34FT W OF E CB LONG BEACH BLVD & 216FT S C/L INT ROOSEVELT RD & LONG BEACH BLVD MKD (B-9-RE 2177-2)	DY 7071

QUAD-YEAR	ELEV	DESCRIPTION (INCLUDE QUAD AND YEAR IN DESCRIPTION)	BM NUMBER
BASELINE (1990)	97.596	USC&GS MON FL 2FT W/O W CB LONG BEACH BLVD & 2FT N/O LIGHT POST #409 20FT S & 36FT W C/L INT LONG BEACH BLVD & COUNTRY CLUB LN (SO ENT) MKD (A-780 1946)	DY 7072
BASELINE (1990)	92.220	CS TRI MON 10IN DN 200FT N C/L INT 44TH ST & LONG BEACH BLVD 34FT W OF E CB MKD (CLEARWATER (B-8 RE2177) NEAR C/L LONG BEACH BLVD	DY 7073
BASELINE (1990)	40.121	CS TRI MON IN WELL 2FT E/O C/L INT ARBOR ST TO THE W & LONG BEACH BLVD MKD (CLEARWATER A-7 RE 2177)	DY 7074
BELLFLWR (1990)	67.414	L&BN S CB CARSON ST 150FT E C/L UPRR R/W & 42FT S C/L CARSON ST 6FT E DR TO BOWLING ALLEY 44FT W/O C/L PROD DEEBOYER AVE	DY 7075
BASELINE (1990)	72.141	CS BR CAP 10IN DN 74FT W C/L MC NAB AVE & 5FT NLY OF N CB HAYFORD ST MKD (BM 9-1A RE 5869 1961	DY 7078
BASELINE (1990)	61.543	L&BN 2FT E BCR @ NE COR ARTESIA BLVD & STUDE-BAKER RD 81FT E & 42FT N C/L INT	DY 7080
BASELINE (1990)	61.056	L&BN 5FT N BCR @ SW COR ARTESIA BLVD & STUDE-BAKER RD 43FT W & 72FT S C/L INT	DY 7081
BASELINE (1990)	42.747	L&BN 1FT E/O BCR @ NE COR CARSON ST & SAN ANSELINA AVE 54FT E & 40FT N/O C/L INT MKD (BM)	DY 7087
BASELINE (1990)	44.064	CS MON FL IN WK 45FT E BCR @ NE COR LAKEWOOD BLVD & CARSON ST 40FT N & 108FT E C/L INT MKD (G 9 A RM NO 6 RE 63)	DY 7088
BASELINE (1990)	49.166	L&T S CB 24FT W/O C/L PROD OBISPO AVE & 40FT S C/L SOUTH ST	DY 7090
BASELINE (1990)	50.076	RDBM TAG S CB 38FT W BCR @ SW COR SOUTH ST & DOWNEY AVE 40FT S & 97FT W C/L INT	DY 7091
BASELINE (1990)	49.329	L&T E CB 50FT S BCR @ SE COR SOUTH ST & DOWNEY AVE 117FT S & 31FT E C/L INT	DY 7092
BASELINE (1990)	53.163	RDBM TAG W CB 3FT S BCR @ SW COR LAKEWOOD BLVD & SOUTH ST 80FT S & 45FT W C/L INT	DY 7093
BASELINE (1990)	55.019	L&BN W CB SERVICE RD 1FT S BCR @ SW COR HEDDA ST & LAKEWOOD BLVD 47FT S & 89FT W C/L INT MKD (BM)	DY 7094
BASELINE (1990)	55.109	L&BRAD W CB SERVICE RD 1FT N BCR @ NW COR LAKEWOOD BLVD & HEDDA ST 47FT N & 89FT W C/L INT	DY 7095

QUAD-YEAR	ELEV	DESCRIPTION (INCLUDE QUAD AND YEAR IN DESCRIPTION)	BM NUMBER
BASELINE (1990)	56.384	L&BRAD W CB SERVICE RD 5FT N BCR @ SW COR LAKE- WOOD BLVD & ASHWORTH ST 40FT S & 90FT W C/L INT	DY 7096
BASELINE (1990)	56.004	FC BRS CAP FLUSH E CB SE COR LAKEWOOD BLVD & ASHWORTH ST 23FT S & 57FT E C/L INT MKD (FC BM 74-230 1946)	DY 7097
BASELINE (1990)	57.379	L&T N CB 17 W C/L PROD GRAYWOOD AVE 18FT N C/L ASHWORTH ST	DY 7098
BASELINE (1990)	58.434	FC BRS DISC E CB 5FT N BCR @ NE COR ASHWORTH ST & CLARK AVE 47FT N & 28FT E C/L INT MKD (FCBM 120-20D)	DY 7100
BASELINE (1990)	58.030	L&BR N CB 17FT W/O C/L PROD LORELEI AVE 17FT N/O C/L ASHWORTH ST	DY 7101
BASELINE (1990)	58.002	L & BN 1FT E BCR @ SE COR LORELEI AVE & ASHWORTH ST 17FT S & 42FT E C/L INT MKD (BM)	DY 7102
BASELINE (1990)	58.133	L&T N CB C/L PROD DUNROBIN AVE 20FT N C/L ASH- WORTH ST	DY 7103
BASELINE (1990)	58.147	L&BN S CB 1 FT E BCR @ SE COR DUNROBIN AVE & ASHWORTH ST 41FT E & 20FT S C/L INT MKD (BM)	DY 7104
BASELINE (1990)	56.287	L&T W CB 3FT S BCR @ SW COR PALO VERDE AVE & ALLINGTON AVE 70FT S & 25FT W C/L INT	DY 7106
BASELINE (1990)	48.544	L&T E CB 8FT N BCR @ NE COR PARAMOUNT BLVD & CANDLEWOOD ST 71FT N & 40FT E C/L INT	DY 7108
BASELINE (1990)	50.626	RDBM TAG E CB 1FT S BCR @ SE COR PARAMOUNT BLVD & SOUTH ST 76FT S & 40FT E C/L INT	DY 7109
SO GATE (1990)	136.268	L&BRAD 2FT S/O BCR @ NE COR FLORENCE AVE & OTIS AVE 50FT N & 20FT E/O C/L INT	DY 7146
SO GATE (1990)	137.213	L&BRAD 7FT S/O BCR @ SE COR FLORENCE AVE & OTIS AVE 55FT S & 20FT E/O C/L INT	DY 7147
SO GATE (1990)	141.030	L&BN N CB FLORENCE AVE 1FT E C B 4FT W BCR @ NW COR CALIFORNIA AVE (W OF RR TRACKS) & FLORENCE AVE 40FT N & 63FT W C/L INT	DY 7148
SO GATE (1990)	143.279	SPK&L 37FT W BCR @ NW COR FLORENCE AVE & STATE ST 35FT N & 80FT W C/L INT	DY 7149
SO GATE (1990)	151.486	CE TAG IN E CB 0.5FT N/O BCR @ NE COR MOUNTAIN VIEW & FLORENCE AVE 25FT E/O & 65FT N/O C/L INT	DY 7150

QUAD-YEAR	ELEV	DESCRIPTION (INCLUDE QUAD AND YEAR IN DESCRIPTION)	BM NUMBER
SO GATE (1990)	71.140	L&T E CB GIBSON AVE @ SE COR GIBSON AVE & ROSECRANS AVE 4FT S BCR IN DEP CB 20FT E & 72FT S C/L INT	DY 7191
SO GATE (1990)	71.506	SQ BR CAP IN CONC 4FT S BCR @ NW COR ROSECRANS AVE & GIBSON AVE 22FT W & 60FT N/O C/L INT 1FT BACK FROM FACE OF CB MKD (BM IAR 219)	DY 7192
SO GATE (1990)	92.593	PK IN N WK OF BR ON ROSECRANS AVE OVER LA RIVER @ E END 1FT N CB FACE 45FT N C/L & 0.2MI W ORANGE AVE	DY 7206
BELLFLWR (1990)	69.902	L&T E CB 8FT S BCR @ SE COR BELLFLOWER BLVD & FLOWER ST 60FT S & 30FT E C/L INT	DY 7281
BASELINE (1990)	178.148	RDBM TAG 38FT S BCR 104FT S & 36FT W C/L INT SLAUSON AVE & SANTA FE AVE	DY 7742
BASELINE (1990)	177.878	RDBM TAG 44FT S BCR 104FT S & 36FT E C/L INT SLAUSON AVE & SANTA FE AVE	DY 7743
BASELINE (1990)	108.752	CS REF MON IN WELL 8IN DN @ SW COR PARAMOUNT BLVD & STEWART & GRAY RD 50FT S & 50FT W/O C/L INT 1FT BK OF WK MKD (RM 1-1960)	DY 7763
BASELINE (1990)	108.030	RDBM TAG 1FT S BCR @ SW COR PARAMOUNT BLVD & BRUNACHE ST 17FT S/O & 38FT W/O C/L INT	DY 7764
BASELINE (1990)	97.329	CS REF MON IN WELL 8IN DN @ SW COR PARAMOUNT BLVD & IMPERIAL HWY 46FT S & 55FT W C/L INT MKD(RM-4 BELL F 10A 1960)	DY 7766
BASELINE (1990)	72.889	RDBM TAG 8FT N BCR INTO CB RET @ SW COR PARAMOUNT BLVD & COMPTON BLVD 59FT S & 40FT W C/L INT	DY 7768
BASELINE (1990)	69.186	RDBM TAG 1FT E BCR @ SE COR COMPTON BLVD & GARFIELD AVE 32FT S & 76FT E C/L INT	DY 7772
BASELINE (1990)	69.092	RDBM TAG 2FT W BCR @ NW COR COMPTON BLVD & GARFIELD AVE 30FT N & 78FT W C/L INT	DY 7773
BASELINE (1990)	154.641	BRASS MON FL ON C/L FLORENCE AVE & 4FT E C/L E BARREL ALAMEDA ST MKD (CE MON-USE NE COR)	DY 7775
SO GATE (1990)	72.408	RDBM TAG IN C B @ SW COR GARFIELD AVE & ROSECRANS AVE 4FT S & 100FT W C/L INT	DY 7783
BASELINE (1990)	75.542	L & T 40FT S BCR @ SW COR PARAMOUNT BLVD & ROSECRANS AVE 120FT S & 35FT W C/L INT	DY 7815

QUAD-YEAR	ELEV	DESCRIPTION (INCLUDE QUAD AND YEAR IN DESCRIPTION)	BM NUMBER
SO GATE (1990)	154.564	RDBM TAG 1FT S BCR @ SW COR OTIS AVE & 61ST ST 25FT S & 15FT W C/L INT	DY 8504
SO GATE (1990)	144.898	RDBM TAG 1FT E BCR @ SE COR OTIS AVE & GAGE AVE 30FT S & 34FT E C/L INT	DY 8505
SO GATE (1990)	144.820	RDBM TAG 3FT S BCR @ SW COR GAGE AVE & OTIS AVE 43FT S & 18FT W C/L INT	DY 8506
SO GATE (1990)	142.130	RDBM TAG 1.5FT N BCR @ NW COR OTIS AVE & BELL AVE 32FT N & 18FT W C/L INT	DY 8507
SO GATE (1990)	141.350	L&BRAD 3FT W/O BCR @ SW COR BELL AVE & OTIS AVE 18FT S & 32FT W C/L INT	DY 8508
BASELINE (1990)	33.800	RDBM TAG IN N CB 12FT W/O END CB & 19FT W/O SPRR TRKS 32FT N & 0.25 MI E/O C/L INT DOMINGUEZ ST & SANTA FE AVE	DY 8575
BASELINE (1990)	34.128	L & T IN N EDGE CONC BASE RR SIGNAL 18FT S & 0.25 MI E/O C/L INT DOMINGUEZ ST & SANTA FE AVE 13FT W/O SPRR TRKS	DY 8576
BASELINE (1990)	36.451	L & BR IN W CB 40FT WLY & 3FT SLY APPROX C/L INT 47TH ST & PACIFIC AVE	DY 8577
BASELINE (1990)	36.536	L & T IN SE COR LIGHT POST BASE #A-11 19FT N & 17FT E APPROX C/L INT 47TH ST & PACIFIC AVE	DY 8578
BASELINE (1990)	53.232	L & T IN E CB 26FT N & 35FT E/O C/L INT LONG BEACH BLVD & 46TH ST	DY 8579
BASELINE (1990)	54.850	L & BR IN W CB SER RD ON C/L PROD 46TH ST & 57FT E/O C/L INT @ LONG BEACH BLVD	DY 8580
BASELINE (1990)	94.409	L&RCE TAG #29861 NEAR CTR CB RET @ NE COR LONG BEACH BLVD & 44TH ST 27FT N & 27FT E/O C/L INT OF SERVICE RD	DY 8581
BASELINE (1990)	102.930	RAMSET IN CHIS SQ IN W CB 3FT S BCR @ SW COR LONG BEACH BLVD & SAN ANTONIO DR 37FT WLY & 90FT SLY C/L INT	DY 8582
BASELINE (1990)	110.301	RAMSET IN W CB 5FT S BCR @ SW COR LONG BEACH BLVD & ROOSEVELT RD 45FT S & 39FT W C/L INT	DY 8583
BASELINE (1990)	95.553	RDBM TAG IN W CB 5FT S DRWY TO BLDG #3711 35FT W & 53FT N APPROX C/L INT LONG BEACH BLVD & 37TH ST	DY 8584
BASELINE (1990)	93.513	L & SQ HD SCREW IN E CB 7FT S BCR @ SE COR LONG BEACH BLVD & 37TH ST 35FT E & 41FT S/O C/L INT	DY 8585

QUAD-YEAR	ELEV	DESCRIPTION (INCLUDE QUAD AND YEAR IN DESCRIPTION)	BM NUMBER
BASELINE (1990)	88.531	L & BR NR CTR CB RET @ SW COR WARDLOW RD & ATLANTIC AVE 34FT S & 34FT W/O C/L INT	DY 8586
BASELINE (1990)	80.536	RDBM TAG IN S CB 4FT W/O BCR @ SW COR WARDLOW RD & CALIFORNIA AVE 28FT S & 40FT W C/L INT	DY 8587
BASELINE (1990)	79.615	RDBM TAG IN E CB 6FT N ECR @ NE COR WARDLOW RD & CALIFORNIA AVE 47FT N & 16FT E/O C/L INT	DY 8588
BASELINE (1990)	63.547	RDBM TAG IN N CB 30FT E/O BCR @ NE COR WARDLOW RD & WALNUT AVE 28FT N & 79FT E/O C/L INT	DY 8590
BASELINE (1990)	54.562	L & BR IN W CB 40FT W & 30FT N C/L INT @ CHERRY AVE & 32ND ST	DY 8591
BASELINE (1990)	53.996	CITY OF L B MON IN WELL 7IN DN ON C/L CHERRY AVE 30FT N C/L 32ND ST	DY 8592
BASELINE (1990)	58.180	L & BR IN E END CB 2FT W/O BCR @ SW COR SPRING ST & JUNIPERO AVE 46FT S & 61FT W/O C/L INT	DY 8594
BASELINE (1990)	57.208	L & BR IN S CB 1FT E/O BCR @ SE COR SPRING ST & JUNIPERO AVE 46FT S & 62FT E/O C/L INT	DY 8595
BASELINE (1990)	24.792	L & BR IN S CB 7FT W/O BCR @ SW COR SPRING ST & CLARK AVE E EDGE CB 43FT S & 77FT W C/L INT	DY 8598
BASELINE (1990)	23.851	L & BR IN N CB 7FT W/O BCR @ NW COR SPRING ST & RUTGERS AVE 42FT N & 43FT W/O C/L INT	DY 8599
BASELINE (1990)	116.452	CS BM MON FL IN C B @ NW COR FIRESTONE BLVD & PARAMOUNT BLVD 125FT N & 41FT W C/L INT MKD (BM 7-8B 1970)	DY 8713
BASELINE (1990)	115.714	RDBM TAG 1FT E BCR @ NE COR FIRESTONE BLVD & PARAMOUNT BLVD 38FT N & 78FT E C/L INT	DY 8714
BASELINE (1990)	117.147	RAM SET 40FT E C/L PARAMOUNT BLVD & 3FT S C/L PROD 4TH PL	DY 8748
BASELINE (1990)	117.226	CS MON IN WELL 8IN DN 1FT BK OF CB @ NW COR PARAMOUNT BLVD & 5TH ST 52FT N & 41FT W/O C/L INT MKD (BM 7-9B 1970)	DY 8749
BASELINE (1990)	121.880	RDBM TAG 1FT S BCR @ SW COR PARAMOUNT BLVD & HARPER AVE 45FT S & 40FT W C/L INT	DY 8750
BELLFLWR (1990)	69.981	L & T 2FT S BCR @ SW COR BELLFLOWER BLVD & FLOWER ST 55FT S & 30FT W C/L INT	DY 8755
BASELINE (1990)	58.803	RDBM TAG 44FT N BCR @ NE COR BELLFLOWER BLVD & ASHWORTH ST 96FT N & 38FT E C/L INT	DY 8756

QUAD-YEAR	ELEV	DESCRIPTION (INCLUDE QUAD AND YEAR IN DESCRIPTION)	BM NUMBER
BASELINE (1990)	65.917	RDBM TAG 1FT S/O BCR @ SW COR ATLANTIC AVE & COMPTON BLVD 38FT W & 76FT S/O C/L INT	DY 8757
BELLFLWR (1990)	64.094	RDBM TAG 36FT N BCR @ NW COR ATLANTIC AVE & ALONDRA BL 112FT N & 42FT W C/L INT	DY 8758
BELLFLWR (1990)	64.415	RDBM TAG 1FT E BCR @ SE COR ATLANTIC AVE & ALONDRA BLVD 40FT S & 71FT E C/L INT	DY 8759
BELLFLWR (1990)	59.559	RAMSET 38FT W/O C/L ATLANTIC AVE & 61FT N/O C/L ATLANTIC PL (BETWEEN TWO C B)	DY 8760
BELLFLWR (1990)	59.808	CITY OF LONG BEACH BR MON FL @ NE COR ATLANTIC AVE & ATLANTIC PL 39FT E & 50FT N/O C/L INT MKD (BM 1028 1967) 2FT N/O BCR	DY 8761
BELLFLWR (1990)	55.863	CITY OF LONG BEACH MON IN WELL 12IN DN @ C/L INT ATLANTIC AVE & ARTESIA BLVD (USE NE EDGE) MKD (RE 3111 1959)	DY 8762
BELLFLWR (1990)	55.570	CITY OF LONG BEACH MON IN WELL 12IN DN @ PI ATLANTIC AVE 260FT S C/L ARTESIA BLVD	DY 8763
BELLFLWR (1990)	51.262	CITY OF LONG BEACH MON IN WELL 24IN DN @ C/L INT ATLANTIC AVE & HARDING ST	DY 8764
BELLFLWR (1990)	63.547	USC & GS MON FL IN S WALL WEST ABUT OF UPRR BRIDGE OVER ATLANTIC AVE MKD (C789 1946) 5FT S/O C/L RR TRACKS	DY 8768
BELLFLWR (1990)	56.031	RDBM TAG 3FT N BCR @ NW COR ATLANTIC AVE & DEL AMO BLVD 65FT N & 40FT W C/L INT	DY 8769
BELLFLWR (1990)	60.963	CITY OF LONG BEACH MON FL 5FT S BCR @ SW COR DEL AMO BLVD & ORANGE AVE 70FT S & 30FT W/O C/L INT MKD (BM 255 1965)	DY 8771
BASELINE (1990)	46.752	L & BRAD 15FT W BCR IN DEPRESSED CB @ SW COR DEL AMO BL & PARAMOUNT BL 42FT S & 82FT W C/L INT	DY 8775
BASELINE (1990)	47.061	CSBM MON FL @ SW COR DEL AMO BL & PARAMOUNT BL 124FT S & 39FT W C/L INT MKD (BM 33-5A 1970)	DY 8776
BELLFLWR (1990)	55.202	RDBM TAG 2FT W BCR @ SW COR ARTESIA BL & SUSANA RD 42FT S & 83FT W C/L INT	DY 8777
BELLFLWR (1990)	55.148	RAMSET 4FT E BCR @ SE COR ARTESIA BL & SUSANA RD 42FT S & 76FT E C/L INT	DY 8778
BELLFLWR (1990)	53.736	RDBM TAG 2FT W BCR @ SW COR ARTESIA BL & BUTLER AVE 42FT S & 40FT W C/L INT	DY 8779

QUAD-YEAR	ELEV	DESCRIPTION (INCLUDE QUAD AND YEAR IN DESCRIPTION)	BM NUMBER
BELLFLWR (1990)	53.738	RDBM TAG 2FT E BCR @ SE COR ARTESIA BL & BUTLER AVE 42FT S & 40FT E C/L INT	DY 8780
BELLFLWR (1990)	53.460	RAMSET 0.7FT S BCR INTO RET @ NW COR ARTESIA BL & ORANGE AVE 65FT N & 33FT W C/L INT	DY 8781
BELLFLWR (1990)	53.780	RAMSET 9FT E BCR @ SE COR ARTESIA BLVD & ORANGE AVE 42FT S & 58FT E C/L INT	DY 8782
BELLFLWR (1990)	54.712	CITY OF LONG BEACH MON FL @ SW COR ARTESIA BL & CHERRY AVE 43FT S & 63FT W C/L INT MKD (BM 150 1970)	DY 8783
BELLFLWR (1990)	54.605	RAMSET 1FT E BCR @ SE COR ARTESIA BLVD & CHERRY AVE 42FT S & 62FT E C/L INT	DY 8784
BELLFLWR (1990)	26.855	CS MON IN WELL 6IN DN 32FT W/O C/L CHARLEMAGNE & ON C/L WORDLOW RD MKD (BM 32-12 1953)	DY 8794
BELLFLWR (1990)	32.670	CS MON IN WELL @ NE COR CHARLEMAGNE AVE & CONANT ST 29FT N & 136FT E C/L INT MKD (BM 32-11 1953)	DY 8795
BASELINE (1990)	127.652	L & T 28FT E C/L ALAMEDA ST ON C/L PROD 85TH ST	DY 8797
BASELINE (1990)	58.307	L & T 2FT N BCR @ NW COR ASHWORTH ST & WOODRUFF AVE 48FT N & 38FT W C/L INT	DY 8798
BASELINE (1990)	57.013	RDBM TAG 1FT S BCR @ SW COR ASHWORTH ST & GRAYWOOD AVE 44FT S & 15FT W C/L INT	DY 8800
BASELINE (1990)	49.032	CITY OF LONG BEACH MON IN WELL 8IN DN @ C/L INT PARAMOUNT BLVD & 55TH WAY (USE N EDGE)	DY 8801
BASELINE (1990)	48.070	RDBM TAG 1FT W BCR @ SW COR PARAMOUNT BLVD & CANDLEWOOD ST 32FT S & 77FT W C/L INT	DY 8802
BASELINE (1990)	55.684	RDBM TAG 7FT S BCR @ SW COR PARAMOUNT BLVD & CENTRALIA ST (W SERVICE RD) 53FT S & 76FT W/O C/L INT	DY 8803
BASELINE (1990)	44.500	RAMSET 45FT N BCR @ NE COR CARSON ST & LAKEWOOD BLVD 106FT N & 42FT E C/L INT	DY 8804
BASELINE (1990)	38.421	CITY OF LONG BEACH MON FL @ NE COR CLARK AVE & CARSON ST 42FT N & 54FT E C/L INT MKD (CLB 555 1970)	DY 8805
BASELINE (1990)	42.480	RDBM TAG 1FT W BCR @ NW COR CARSON ST & SAN ANSELINA AVE 40FT N & 45FT W C/L INT	DY 8806

QUAD-YEAR	ELEV	DESCRIPTION (INCLUDE QUAD AND YEAR IN DESCRIPTION)	BM NUMBER
BASELINE (1990)	69.191	RDBM TAG IN E CB 2FT N/O BCR @ NE COR STUDEBAKER RD & 166TH ST 42FT E/O & 72FT N/O C/L INT	DY 8808
BASELINE (1990)	50.606	LACS MON FL @ S END OF CB IN W CB 45FT N/O BCR @ NW COR STUDEBAKER RD & SOUTH ST 43FT W & 122FT N/O C/L INT MKD (BM 9-8C 1970)	DY 8810
BASELINE (1990)	50.384	RDBM TAG IN S CB 2FT W/O BCR @ SW COR STUDEBAKER RD & SOUTH ST 42FT S & 75FT W/O C/L INT	DY 8811
BASELINE (1990)	51.043	RDBM TAG IN SO CB 2FT W/O BCR @ SE COR SOUTH ST & PALO VERDE AVE 42FT S & 65FT E/O C/L INT	DY 8812
BASELINE (1990)	47.843	L & T IN E CB 2FT S/O BCR @ SE COR PALO VERDE AVE & CANDLEWOOD ST 75FT S & 30FT E/O C/L INT	DY 8813
BASELINE (1990)	26.459	RDBM TAG IN S CB 1FT W/O BCR @ SE COR PALO VERDE AVE & WARDLOW RD 40FT S & 64FT E/O C/L INT	DY 8814
BASELINE (1990)	44.428	LACS MON FL IN C B @ NW COR DEL AMO BLVD & PALO VERDE AVE 43FT N & 103 W C/L INT MKD (BM 9-10A 1965)	DY 8815
LAKWOOD (1990)	52.526	LACS MON IN WELL 8IN DN @ NE COR CLARK AVE & SOUTH ST 53FT N & 57FT E C/L INT MKD (CLEARWATER H 5 RM 2)	DY 8819
LAKWOOD (1990)	54.489	L AFC MON FL 36FT E BCR @ NE COR BELLFLOWER BL & SOUTH ST 46FT N & 114FT E C/L INT MKD (BM 4-503 A 1946)	DY 8824
LAKWOOD (1990)	54.386	RDBM TAG 0.5FT W BCR INTO RET @ SE COR BELLFLOWER BL & SOUTH ST 46FT S & 75FT E C/L INT	DY 8825
LAKWOOD (1990)	53.281	RDBM TAG 44FT W BCR @ SW COR SOUTH ST & WOODRUFF AVE 40FT S & 116FT W C/L INT	DY 8827
LAKWOOD (1990)	53.255	RDBM TAG 1FT E BCR @ SE COR SOUTH ST & WOODRUFF AVE 40FT S & 76FT E C/L INT	DY 8828
LAKWOOD (1990)	52.669	L & BRAD 38FT N/O SOUTH ST & ON C/L PROD SNOWDEN AVE	DY 8829
BASELINE (1990)	144.392	LACE MON FL IN E END CATCH BASIN 21FT E/O BCR @ NE COR SLAUSON AVE & MALT AVE 86FT E & 41FT N/O C/L INT	DY 9213
BASELINE (1990)	143.998	RD BM TAG IN CONC CB 3FT W/O BCR @ NW COR SLAUSON AVE & MALT AVE 52FT W & 40FT N/O C/L INT	DY 9214

QUAD-YEAR	ELEV	DESCRIPTION (INCLUDE QUAD AND YEAR IN DESCRIPTION)	BM NUMBER
BASELINE (1990)	138.482	SPK IN CONC CB 5FT W/O BCR @ NW COR SLAUSON AVE & BOXFORD AVE 40FT N & 70 FT W/O C/L INT MKD (SD 3136)	DY 9215
BASELINE (1990)	135.544	CS BM MON @ BK OF CB 40FT N/O C/L SLAUSON AVE & 135FT W/O C/L ZAMBRANO ST 74FT W/O BCR MKD (BM 4-198 1968)	DY 9216
BASELINE (1990)	139.574	CS MON 1IN UP 50FT S/O C/L SLAUSON AVE & 0.25MI W/O C/L EASTERN AVE NR TP #1007282H MKD (CO SUR RE 329) USE N EDGE	DY 9218
BASELINE (1990)	142.900	RD BM TAG IN CONC CB 2FT E/O BCR @ NE COR SLAUSON AVE & HELIOTROPE AVE 36FT N & 37FT E/O C/L INT	DY 9219
BASELINE (1990)	143.028	RD BM TAG IN CONC CB 2FT W/O BCR @ NW COR SLAUSON AVE & HELIOTROPE AVE 36FT N & 37FT W/O C/L INT	DY 9220
BASELINE (1990)	156.795	RD BM TAG IN CONC CB 2FT E/O BCR @ NE COR SLAUSON AVE & GIFFORD AVE 33FT E & 35FT N/O C/L INT	DY 9221
BASELINE (1990)	157.195	RD BM TAG IN CONC CB 2FT W/O BCR @ NW COR SLAUSON AVE & GIFFORD AVE 32FT W & 35FT N/O C/L INT	DY 9222
BASELINE (1990)	166.012	RD BM TAG IN CONC CB 2FT W/O BCR @ NW COR SLAUSON AVE & DOWNEY RD 54FT W & 36FT N C/L INT	DY 9223
BASELINE (1990)	166.166	L&CS TAG IN CONC CB 13FT E/O BCR @ NE COR SLAUSON AVE & BOYLE AVE 70FT E & 35FT N/O C/L INT	DY 9224
BASELINE (1990)	173.755	RD BM TAG IN CONC CB 2FT E/O BCR @ NE COR SOTO ST & SLAUSON AVE 65FT E & 35FT N/O C/L INT	DY 9225
BASELINE (1990)	176.899	CS MON IN WELL DN 8IN NEAR C/L SLAUSON AVE 15FT W/O C/L PACIFIC AVE MKD (LA CO SUR CONTROL SYS TRAVERSE STA WATTS J-2B RE4233 1938)	DY 9226
BASELINE (1990)	68.235	CS MON IN WELL 1FT BK OF WK @ NE COR ALONDRA BLVD & CLARK AVE 55FT N & 52FT E/O C/L INT	DY 9285
BASELINE (1990)	69.590	LS TAG IN CB 11FT W/O BCR @ NW COR ALONDRA BLVD & VIRGINIA AVE 54FT W & 40FT N/O C/L INT (MKD LS 2428)	DY 9286
BASELINE (1990)	69.135	RAMSET CTR CB RET @ NE COR ALONDRA BLVD & LAKEWOOD BLVD 42FT N & 57FT E/O C/L INT	DY 9287

QUAD-YEAR	ELEV	DESCRIPTION (INCLUDE QUAD AND YEAR IN DESCRIPTION)	BM NUMBER
BASELINE (1990)	68.017	L&BR 2FT E/O BCR @ NW COR ALONDRA BLVD & PITTS AVE 42FT N & 39FT W/O C/L INT	DY 9288
BASELINE (1990)	66.152	CS MON IN WELL 1FT BK OF WK @ NE COR ALONDRA BL & DOWNEY AVE 51FT N & 59FT E/O C/L INT MKD (BM 6-10A)	DY 9289
BASELINE (1990)	68.890	L&BN 6FT N/O BCR @ NW COR ALONDRA BLVD & ORIZABA AVE 73FT N & 28FT W/O C/L INT	DY 9290
BASELINE (1990)	68.069	CS MON FL IN S WALL C B @ NW COR PARAMOUNT BLVD & ALONDRA BLVD 42FT W & 120FT N/O C/L INT MKD (BM 6-11B 1975)	DY 9292
BASELINE (1990)	72.332	CS MON 1FT BK OF WK CTR OF CB RET @ SW COR PARA- MOUNT BLVD & COMPTON BLVD 56FT W & 50FT S/O C/L INT MKD (BM 6-13A 1970)	DY 9293
BASELINE (1990)	109.496	L&T 1FT S/O BCR @ SE COR PARAMOUNT BLVD STEWART & GRAY RD 38FT E & 76FT S/O C/L INT	DY 9295
BASELINE (1990)	103.764	L&FC TAG IN CTR OF CB RET @ NW COR PARAMOUNT BL & QUILL DR 29FT N & 47FT W/O C/L INT	DY 9296
BASELINE (1990)	90.081	L&BD 1FT S/O BCR @ SE COR PARAMOUNT BLVD & ADOREE AVE 38FT E & 44FT S/O C/L INT	DY 9298
BASELINE (1990)	72.204	L&BN IN N CB COMPTON BLVD 32FT N & 50FT W/O C/L INT VERMONT AVE	DY 9301
BASELINE (1990)	69.619	L&BD CTR CB RET @ SE COR COMPTON BLVD & MINNE- SOTA AVE 36FT S & 43FT E/O C/L INT	DY 9302
BASELINE (1990)	68.745	CSBM MON IN WELL 1FT BK OF WK @ W EDGE OF DRIVE- WAY TO FIRE STATION NO 31 210FT E & 41FT N/O C/L INT COMPTON BLVD & GARFIELD AVE MKD (BM 6-14A)	DY 9304
BASELINE (1990)	69.204	L&T N CB COMPTON BLVD 30FT N & 58FT E/O C/L INT TEXACO AVE (TO THE NORTH)	DY 9305
BASELINE (1990)	69.653	L&T 1FT W/O BCR @ SW COR COMPTON BLVD & TEXACO AVE (TO THE SOUTH) 61FT W & 32FT S/O C/L INT	DY 9306
BASELINE (1990)	88.378	LAFC MON IN E ABUT @ SE COR COMPTON BLVD & BR OVER LA RIVER 32FT S C/L MKD (BM 4-26)	DY 9308
BASELINE (1990)	68.474	L&BN IN S CB COMPTON BLVD 41FT S & 11FT W/O C/L PROD HARRIS AVE TO THE N	DY 9311
BASELINE (1990)	68.382	L&BN 1FT W/O BCR @ NW COR COMPTON BLVD & HARRIS AVE TO THE N 36FT W & 32FT N/O C/L INT	DY 9312

QUAD-YEAR	ELEV	DESCRIPTION (INCLUDE QUAD AND YEAR IN DESCRIPTION)	BM NUMBER
BASELINE (1990)	71.319	RDBM TAG IN CB 5FT E BCR INTO RET @ SW COR ROSECRANS AVE & ALAMEDA ST (E BARREL) 33FT S & 33FT W/O C/L INT	DY 9313
BASELINE (1990)	78.036	RAMSET 2FT S BCR @ SE COR ALAMEDA ST E BBL 24FT E/O & 52FT S/O C/L INT BANNING ST	DY 9314
BASELINE (1990)	87.507	RAMSET IN CTR CB RET @ SE COR ALAMEDA ST E BBL & LYNWOOD RD 20FT E & 32FT S/O C/L INT	DY 9315
BASELINE (1990)	112.835	RDBM TAG IN CB 4FT S/O BCR @ SE COR (E BARREL) ALAMEDA ST & KANSAS AVE 18FT E & 37FT S/O C/L INT	DY 9317
BASELINE (1990)	117.991	RDBM TAG 4FT S BCR @ SE COR E BBL ALAMEDA ST IN NLY WALL C B 19FT E & 45FT S C/L INT SOUTHERN AV	DY 9318
BASELINE (1990)	138.803	CS MON IN WELL 30FT E & 15FT S/O APPROX C/L INT W BBL ALAMEDA ST & NADEAU ST USE W EDGE	DY 9321
BASELINE (1990)	149.270	L&T 28FT E C/L ALAMEDA ST NEAR C/L PROD 76TH ST	DY 9322
BASELINE (1990)	161.109	L&T 20FT W C/L E BBL ALAMEDA ST ON OR NEAR C/L PROD ZOE AVE	DY 9323
BASELINE (1990)	91.755	L AFC MON FL IN WK @ SW END BRDG NO B977 OVER SAN GABRIEL RIVER 41FT S/O C/L ALONDRA BLVD MKD (BM 075-00877 1974)	DY 9375
BASELINE (1990)	89.810	PK N IN CONC CB @ SE END BRDG NO B977 OVER SAN GABRIEL RIVER 37FT S/O C/L ALONDRA BLVD	DY 9376
BASELINE (1990)	72.991	CS MON FL IN S WALL C B @ NW COR STUDEBAKER RD & ALONDRA BLVD 43FT W & 110FT N/O C/L INT MKD (BM 9-3C)	DY 9377
BASELINE (1990)	71.979	L&BR CTR OF CB RET @ SE COR ALONDRA BLVD & STUDEBAKER RD 53FT E & 53FT S/O C/L INT	DY 9378
BASELINE (1990)	70.466	RDBM TAG 3FT S/O BCR @ SE COR STUDEBAKER RD & FALCON WAY EAST 50FT S & 42FT E/O C/L INT (ENT RD TO CERRITOS COLLEGE)	DY 9379
BASELINE (1990)	63.766	RDBM TAG IN S WALL C B @ NE COR STUDEBAKER RD & ON RAMP TO ARTESIA FWY (91) ON S SIDE FWY 43FT N & 43FT E/O C/L INT	DY 9381
BASELINE (1990)	61.021	CS BM MON FL IN E WALL C B @ NW COR ARTESIA BLVD & STUDEBAKER RD 47FT N & 151FT W/O C/L INT 75FT W/O BCR MKD (BM 9-6C 1965)	DY 9382

QUAD-YEAR	ELEV	DESCRIPTION (INCLUDE QUAD AND YEAR IN DESCRIPTION)	BM NUMBER
BASELINE (1990)	55.750	CS BM MON FL IN S WALL C B 5FT N/O BCR @ NW COR STUDEBAKER RD & 183RD ST 69FT N & 43FT W/O C/L INT MKD (BM 9-7B 1975)	DY 9383
BASELINE (1990)	69.679	L AFC MON FL IN WK @ W END BRDG NO B972 OVER SAN GABRIEL RIVER 42FT S/O C/L SOUTH ST MKD (BM 074-02797 1974)	DY 9385
BASELINE (1990)	39.750	RDBM TAG 3FT S/O BCR @ SW COR PALO VERDE AVE & ARBOR RD 30FT W & 58FT S/O C/L INT	DY 9386
BASELINE (1990)	25.192	CITY OF LONG BEACH MON IN WELL @ C/L INT PALO VERDE AVE & WARDLOW RD MKD (C L B 1958 RE 3111)	DY 9387
BASELINE (1990)	24.071	RAMSET 1FT S/O BCR @ SE COR PALO VERDE AVE & METZ ST 30FT E & 57FT S/O C/L INT	DY 9388
BASELINE (1990)	25.397	L AFC MON FL IN CB 52FT S/O BCR @ SW COR LOS COYOTES DIAG & SPRING ST 137FT S & 37FT W/O C/L INT MKD (BM 120-81 1961)	DY 9389
BASELINE (1990)	23.075	L AFC MON FL IN CB 75FT S/O BCR @ SW COR BELLFLOWER BLVD & SPRING ST 40FT W & 140FT S/O C/L INT MKD (BM 120-82 1961)	DY 9390
BASELINE (1990)	22.960	CITY OF LONG BEACH MON IN WELL 8IN DN @ C/L INT SPRING ST & CHARLEMAGNE AVE MKD (C L B 1968 KE 3111)	DY 9391
BASELINE (1990)	12.533	CS MON IN VERT FACE WALL @ SE COR SPRING ST UNDERPASS & MAIN RNWY OF L B AIRPORT 34FT S/O C/L SPRING ST 3FT ABOVE CB MKD (BM 8-39B 1965- RE 5869) USE CTR PUNCH MARK	DY 9392
BASELINE (1990)	13.498	CS BM MON IN VERT FACE WALL @ NW COR SPRING ST UNDERPASS & MAIN RNWY OF L B AIRPORT 34FT N/O C/L SPRING ST 3FT ABOVE CB MKD (BM 8-39C 1965 RE 5869) USE CTR PUNCH MARK	DY 9393
BASELINE (1990)	64.321	L&BR 17FT W/O BCR @ NW COR WARDLOW RD & WALNUT AVE 50FT W & 28FT N/O C/L INT	DY 9395
BASELINE (1990)	29.211	L&BN @ BCR @ SE COR PALO VERDE AVE & HARCO ST 30FT E & 58FT S/O C/L INT MKD (KN 233)	DY 9396
BASELINE (1990)	54.440	L&RCE TAG NO 12795 1FT N/O BCR @ NE COR PALO VERDE AVE & ANDY ST 55FT N & 32FT E/O C/L INT	DY 9397
BASELINE (1990)	39.842	L&BR CTR CB RET @ SW COR FACULTY AVE & CARSON ST 33FT W & 48FT S C/L INT	DY 9400

QUAD-YEAR	ELEV	DESCRIPTION (INCLUDE QUAD AND YEAR IN DESCRIPTION)	BM NUMBER
BASELINE (1990)	38.271	PK & L NR S END E ABUT CONC BR 50FT S C/L CARSON ST & 194FT E/O C/L GREENBIER RD	DY 9401
BELLFLWR (1990)	67.248	CITY OF LONG BEACH MON 1FT BK/O CB @ NE COR CARSON ST & CHERRY AVE 7FT W/O BCR 45FT N & 77FT E/O C/L INT MKD (CLB BM 444 1972)	DY 9416
BELLFLWR (1990)	67.600	L&BR CTR CB RET @ SW COR CARSON ST & CHERRY AVE 50FT S & 60FT W/O C/L INT	DY 9417
BELLFLWR (1990)	56.126	CITY OF LONG BEACH MON FL 1FT N/O BCR @ NE COR PARAMOUNT BLVD & 63RD ST 40FT N & 40FT E C/L INT MKD (LBBM 1172 1966)	DY 9419
BELLFLWR (1990)	61.269	RAMSET 12FT E/O BCR @ SE COR PARAMOUNT BLVD & 68TH ST 69FT E & 20FT S/O C/L INT	DY 9420
BELLFLWR (1990)	60.533	RDBM TAG 2FT E/O BCR @ NE COR DEL AMO BLVD & ORANGE AVE 42FT N & 50FT E/O C/L INT	DY 9432
BELLFLWR (1990)	27.409	RDBM TAG IN S WALL CATCH BASIN 7FT N/O BCR @ NW COR CHARLEMAGNE AVE & WARDLOW RD 18FT W & 73FT N/O C/L INT	DY 9434
BELLFLWR (1990)	33.771	L&T 0.5 W/O BCR @ SW COR CONANT ST & CHARLEMAGNE AVE 50FT W & 28FT N/O C/L INT	DY 9435
BELLFLWR (1990)	37.319	L&T IN N CB NR CTR OF CURVE CHARLEMAGNE AVE & PARKCREST ST ON PROD OF W CB CHARLEMAGNE AVE & 5FT S/O C/L PROD PARKCREST ST	DY 9436
BELLFLWR (1990)	37.435	L&N 3FT E/O BCR @ SW COR PARKCREST ST & CHARLEMAGNE AVE 15FT S & 77FT W/O C/L INT	DY 9437
BASELINE (1990)	38.286	L&BR CTR CB RET @ SW COR CARSON ST & CLARK AVE 34FT W & 49FT S/O C/L INT	DY 9438
BASELINE (1990)	55.619	RDBM TAG 1FT W/O C B SO CB SERVICE RD CARSON ST @ LEVELSIDE AVE 60FT N & 5FT E C/L PROD	DY 9534
BASELINE (1990)	55.712	RDBM TAG IN N CB SERVICE RD CARSON ST 3FT E/O C B 83FT N & 44FT W/O C/L INT LEVELSIDE AVE	DY 9535
BASELINE (1990)	60.301	RD TAG @ NE COR CARSON ST & PARAMOUNT BLVD 79FT N & 42FT E/O C/L INT 1FT N/O BCR	DY 9536
BASELINE (1990)	60.544	RD TAG @ SW COR CARSON ST & PARAMOUNT BLVD 42FT S & 68FT W/O C/L INT 1FT W/O BCR	DY 9537
BASELINE (1990)	22.788	RDBM TAG IN E CB WOODRUFF AVE @ SE COR SPRING ST 84FT S & 44FT E C/L INT	DY 9539

QUAD-YEAR	ELEV	DESCRIPTION (INCLUDE QUAD AND YEAR IN DESCRIPTION)	BM NUMBER
BASELINE (1990)	21.528	RDBM TAG 1FT W BCR @ NW COR SPRING ST & PALO VERDE AVE 42FT N & 58FT W C/L INT	DY 9540
BASELINE (1990)	22.134	RDBM TAG 1FT E BCR @ NE COR SPRING ST & & PALO VERDE AVE 42FT N & 58FT E C/L INT	DY 9541
BELLFLWR (1990)	52.716	RDBM TAG IN W/LY CB SERVICE RD 10FT N/O BCR @ NE COR C B 65FT N & 86FT W/O C/L INT ATLANTIC AVE & HARDING ST	DY 9646
BELLFLWR (1990)	48.886	RDBM TAG IN WALK TO BANK 48FT W & 87FT N/O C/L INT ATLANTIC AVE & SOUTH ST	DY 9648
BASELINE (1990)	98.389	RDBM TAG 2FT E/O BCR @ NE COR IMPERIAL HWY & PARAMOUNT BLVD 67FT E & 40FT N/O C/L INT	DY 9658
SO GATE (1990)	142.761	RDBM TAG IN CB 1FT E/O BCR @ SE COR FLORENCE AVE & STATE ST 35FT S & 49FT E/O CL INT	DY 9724
SO GATE (1990)	155.272	RDBM TAG W CB 20FT N/O BCR @ NW COR OTIS AVE & 61ST ST 44FT N & 15FT W/O C/L INT	DY 9727
SO GATE (1990)	71.736	L&T IN CB 14FT N/O BCR INTO RET @ SW COR ROSECRANS AVE & ORANGE AVE 52FT S & 23FT W/O C/L INT	DY 9733
BASELINE (1990)	132.761	RDBM TAG 1FT N/O CF @ E END C B 145FT E/O C/L ALEXANDER ST & 40FT N/O C/L SLAUSON AVE 0.2 MILE E/O EASTERN AVE	DY 9761
BASELINE (1990)	134.983	RD BM TAG @ SO END C B 1FT E/O CB 43FT E/O C/L EASTERN AVE & 84FT N/O C/L SLAUSON AVE	DY 9762
BASELINE (1990)	135.362	RD BM TAG E END C B 15FT W/O BCR 96FT W/O C/L EASTERN AVE & 38FT S/O SLAUSON AVE	DY 9763
BELLFLWR (1990)	44.008	RDBM TAG IN CB 2FT N/O BCR 33FT E/O C/L ATLANTIC AVE & 37FT S/O C/L MARKET ST	DY 10059
BELLFLWR (1990)	55.232	CITY OF LONG BEACH BM MON FL 1FT BACK OF CB 1FT W/O BCR 58FT N/O C/L DEL AMO BLVD & 108FT W/O C/L CHERRY AVE MKD (CLB BM 1979)	DY 10061
BELLFLWR (1990)	55.919	L&T IN CB 55FT E/O BCR 42FT N/O C/L DEL AMO BLVD & 152FT E/O C/L CHERRY AVE MKD (BM)	DY 10062
BELLFLWR (1990)	64.617	LAFC BM MON FL 4FT IS/O BCR 42FT E/O C/L BELLFLOWER BLVD & 111FT S/O C/L ARTESIA BLVD MKD (FCBM 74-20 C 1946)	DY 10063

QUAD-YEAR	ELEV	DESCRIPTION (INCLUDE QUAD AND YEAR IN DESCRIPTION)	BM NUMBER
BASELINE (1990)	23.144	CITY OF LONG BEACH MON FL 1FT BACK OF CB 42FT N/O C/L SPRING ST & 44FT W/O C/L CHARLEMAGNE AVE 8FT W/O BCR MKD (RE 3111 1033 CLB 1969)	DY 10064
SO GATE (1990)	155.434	L&BN 8FT E/O BCR 35FT S/O C/L FLORENCE AVE & 55FT E/O C/L SANTA FE AVE @ E END C B	DY 10065
SO GATE (1990)	71.754	L&T CTR CB RET 52FT S/O C/L ROSECRANS AVE & 24FT E/O C/L ORANGE AVE	DY 10066
SO GATE (1990)	72.579	RDBM TAG 2FT E/O BCR 42FT S/O C/L ROSECRANS AVE & 75FT E/O C/L GARFIELD AVE	DY 10067
BASELINE (1990)	38.805	L&BR MCR SW COR 46FT W/O C/L ALAMEDA ST (W BARREL) & 55FT S/O C/L DEL AMO BLVD	DY 10101
BASELINE (1990)	38.128	L&BR MCR NE COR 45FT E/O C/L ALAMEDA ST (W BARREL) & 55FT N/O C/L DEL AMO BLVD	DY 10102
BASELINE (1990)	46.230	L&LS TAG #2760 IN CB NEAR C/L PROD LAUREL PARK RD FROM WEST IN THE E CB OF ALAMEDA ST (WEST BARREL)	DY 10138
BASELINE (1990)	59.844	RDBM TAG IN CB @ NE COR ALAMEDA ST (W BARREL) & AUTO DR SO 65FT N & 40FT E/O C/L INT (2FT N/O BCR)	DY 10139
BASELINE (1990)	64.486	L&T IN CB @ NE COR ALAMEDA ST (W BARREL) & ALONDRA BLVD 50FT E & 30FT N/O C/L INT (5FT E/O BCR)	DY 10140
BASELINE (1990)	113.587	RDBM TAG IN CB @ NE COR ALAMEDA ST (W BARREL) & TWEEDY BLVD 58FT N & 29FT E/O C/L INT (2FT N/O BCR)	DY 10141
BASELINE (1990)	124.516	L&T IN CB @ SE COR ALAMEDA ST & FIRESTONE BLVD 29FT E & 60FT S/O C/L INT (5FT N/O BCR) STAMPED (BM)	DY 10142
BASELINE (1990)	139.586	RDBM TAG IN CB @ SW COR ALAMEDA ST & NADEAU ST 35FT W & 60FT S/O APPROX C/L INT (W BARREL) 2FT S/O BCR	DY 10143
BASELINE (1990)	165.975	L&T IN CB # SE COR ALAMEDA ST (W BARREL) & GAGE AVE 40FT S & 25FT E/O C/L INT (6FT N/O BCR) STAMPED (BM)	DY 10144
BASELINE (1990)	175.271	RDBM TAG IN CB @ SE COR ALAMEDA ST (E BARREL) & RANDOLPH ST (S BARREL) 50FT S & 20FT E/O APPROX C/L INT (6FT S/O BCR)	DY 10145

QUAD-YEAR	ELEV	DESCRIPTION (INCLUDE QUAD AND YEAR IN DESCRIPTION)	BM NUMBER
BASELINE (1990)	179.372	RDBM TAG IN CB @ SW COR ALAMEDA ST (W BARREL) & SLAUSON AVE 27FT W & 55FT S/O C/L INT (3FT S/O BCR)	DY 10146
BASELINE (1990)	176.879	PK W/WASHER STAMPED BM 176.864 IN CB @ SE COR SLAUSON AVE & PACIFIC BLVD 100FT E & 35FT S/O C/L INT (20FT E/O BCR)	DY 10147
BASELINE (1990)	148.596	RDBM TAG IN CB @ SE COR SLAUSON AVE & ATLANTIC BLVD 41FT S & 50FT E/O C/L INT (1FT W/O BCR)	DY 10197
BASELINE (1990)	156.027	RDBM TAG N CB SLAUSON AVE 40FT N/O C/L @ OR NEAR C/L PROD TRIANGLE DR FROM THE SOUTH (2FT W/O E END C B)	DY 10198
BASELINE (1990)	158.971	RDBM TAG @ SW COR SLAUSON AVE & GREENWOOD AVE 42FT S & 66FT W/O C/L INT (1FT W/O BCR)	DY 10199
BASELINE (1990)	148.329	RDBM TAG NE COR CONC HDWL TO ELECTRIC TOWER #BTL1-258D4 193FT E/O E END BRIDGE #53-212 OVER RIO HONDO & 40FT S/O C/L TELEGRAPH RD	DY 10200
BASELINE (1990)	142.747	CALIF DIV OF HWY MON IN CB @ NW COR OF TELEGRAPH RD & PARAMOUNT BLVD 40FT N & 54FT W/O C/L INT 4FT W/O BCR MKD (K4 1941 5 1972)	DY 10201
BASELINE (1990)	64.417	DPW BM TAG IN S CB @ SW COR COMPTON BLVD & SANTA FE AVE 78FT W & 42FT S/O C/L INT (1FT W/O BCR)	DY 10211
BASELINE (1990)	64.730	DPW BM TAG IN N CB @ NW COR COMPTON BLVD & SANTA FE AVE 77FT W & 42FT N/O C/L INT (1FT E/O BCR)	DY 10212
BASELINE (1990)	66.285	DPW BM TAG IN S CB @ SW COR COMPTON BLVD & BURRIS AVE 28FT E & 48FT S/O C/L INT (1FT W/O BCR)	DY 10213
BASELINE (1990)	66.362	DPW BM TAG IN CB @ NE COR COMPTON BLVD & BURRIS AVE 28FT E & 45FT N/O C/L INT (11FT W/O BCR-INTO RET)	DY 10214
BASELINE (1990)	66.184	DPW BM TAG IN S CB @ SE COR COMPTON BLVD & ATLANTIC AVE 63FT E & 30FT S/O C/L INT (1FT E/O BCR)	DY 10215
BASELINE (1990)	68.509	DPW BM TAG N CB @ NW COR COMPTON BLVD & GIBSON AVE 46FT W & 35FT N/O C/L INT (1FT W/O BCR)	DY 10216
BASELINE (1990)	68.705	DPW BM TAG IN N CB @ NW COR COMPTON BLVD & ORANGE AVE 36FT N & 55FT W/O C/L INT (2FT E/O BCR-INTO CB RET)	DY 10217

QUAD-YEAR	ELEV	DESCRIPTION (INCLUDE QUAD AND YEAR IN DESCRIPTION)	BM NUMBER
BASELINE (1990)	69.178	DPW BM TAG IN E CB @ SE COR COMPTON BLVD & ORANGE AVE 68FT S & 32FT E/O C/L INT (1FT S/O BCR)	DY 10218
BELLFLWR (1990)	69.962	RDBM TAG IN S CB @ SW COR COMPTON BLVD & MINNESOTA AVE 45FT W & 34FT S/O C/L INT (1FT W/O BCR)	DY 10219
BASELINE (1990)	76.428	DPW BM TAG W CB @ SW COR PARAMOUNT BLVD & ROSE ST 33FT S/O & 42FT W/O C/L INT (1FT N/O BCR)	DY 10220
BASELINE (1990)	134.550	DPW BM TAG E CB @ NE COR PARAMOUNT BLVD & GALLATIN RD 38FT E/O & 64FT N/O C/L INT 1FT S/O BCR	DY 10221
BASELINE (1990)	68.322	RDBM TAG IN S CB @ SE COR ALONDRA BLVD & PARAMOUNT BLVD 68FT E & 43FT S/O C/L INT (8FT W/O BCR)	DY 10222
BASELINE (1990)	67.244	DPW BM TAG IN S CB @ SW COR ALONDRA BLVD & HAYTER AVE 42FT S & 25FT W/O C/L INT (1FT W/O BCR)	DY 10223
BASELINE (1990)	69.436	DPW BM TAG IN N CB @ NE COR ALONDRA BLVD & VIRGINIA AVE 42FT N & 51FT E/O C/L INT (1FT E/O BCR)	DY 10224
BASELINE (1990)	31.747	DPW BM TAG IN SW COR C B 44FT E & 27FT N/O C/L INT DOMINGUEZ ST & PROSPECT AVE	DY 10228
BASELINE (1990)	53.781	DPW BM TAG IN W CB @ NE COR CHERRY AVE & WARDLOW RD 40FT E & 50FT N/O C/L INT (1FT N/O ECR)	DY 10229
BASELINE (1990)	53.872	DPW BM TAG IN W CB @ SE COR CHERRY AVE & WARDLOW RD 45FT E & 47FT S/O C/L INT (1FT S/O ECR)	DY 10230
BASELINE (1990)	78.840	DPW BM TAG IN E CB @ SE COR CHERRY AVE & SPRING ST 74FT S & 43FT E/O C/L INT (1FT N/O BCR)	DY 10231
BASELINE (1990)	31.854	DPW BM TAG IN NW COR SPRING ST & ENT TO NATIONAL GUARD UNIT-35FT N & 1320FT E/O INT SPRING ST & REDONDO BEACH BLVD	DY 10232
BASELINE (1990)	22.431	DPW BM TAG IN N CB @ NE COR SPRING ST (N SERVICE RD) & RUTGERS AVE 82FT N & 46FT E/O C/L INT (1FT E/O BCR)	DY 10233
BASELINE (1990)	23.214	RAM SET N CB @ NE COR SPRING ST & WOODRUFF AVE 48FT N & 75FT E/O C/L INT (6FT E/O BCR)	DY 10234

QUAD-YEAR	ELEV	DESCRIPTION (INCLUDE QUAD AND YEAR IN DESCRIPTION)	BM NUMBER
BASELINE (1990)	26.684	DPW BM TAG IN W CB @ NW COR PALO VERDE AVE & WARDLOW RD 77FT N & 30FT W/O C/L INT (1FT N/O BCR)	DY 10236
BASELINE (1990)	37.297	L&BN IN E CB @ SE COR PALO VERDE AVE & CENTRALIA ST 57FT S & 31FT E/O C/L INT (1FT S/O BCR)	DY 10237
BASELINE (1990)	55.629	L&BRD IN CB @ SW COR STUDEBAKER RD & 183RD ST 50FT S & 50FT W/O C/L INT (18FT N/O BCR-IN CB RET)	DY 10238
BASELINE (1990)	49.370	L.B. CITY TAG MKD LS#4866 E CB PARAMOUNT BLVD 40FT E & 30FT S/O C/L INT PARAMOUNT BLVD & 55TH WAY (TO THE EAST) USE N EDGE	DY 10239
BELLFLWR (1990)	60.566	CITY OF LONG BEACH MON FLUSH 1FT W/O BCR & 1FT N/O CB @ NW COR PARAMOUNT BLVD & ARTESIA BLVD 65FT W & 46FT N/O C/L INT MKD (C.L.B. BM 1981)	DY 10325
BELLFLWR (1990)	60.608	DPW BM TAG 1FT N/O BCR @ NE COR PARAMOUNT BLVD & ARTESIA BLVD 45FT E & 70FT N/O C/L INT	DY 10326
BELLFLWR (1990)	65.684	DPW BM TAG 1FT S/O BCR @ SW COR PARAMOUNT BLVD & JACKSON ST 42FT W & 55FT S/O C/L INT	DY 10327
BELLFLWR (1990)	65.685	DPW BM TAG 1FT N/O BCR @ NW COR PARAMOUNT BLVD & JACKSON ST 42FT W & 55FT N/O C/L INT	DY 10328
BELLFLWR (1990)	48.691	DPW BM TAG 1FT W/O BCR @ SE COR ATLANTIC AVE & SOUTH ST 50FT E & 30FT S/O C/L INT	DY 10356
BELLFLWR (1990)	44.605	DPW BM TAG 2FT W/O BCR @ NW COR ATLANTIC AVE & MARKET ST 48FT W & 26FT E/O C/L INT	DY 10357
BELLFLWR (1990)	54.857	DPW BM TAG 5FT N/O BCR @ NE COR ATLANTIC AVE & DEL AMO BLVD 40FT E & 88FT N/O C/L INT	DY 10358